

## Anti-EGFR antibody (800-900) [S9MR] (STJ11102229)

STJ11102229

### GENERAL INFORMATION

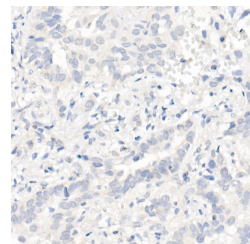
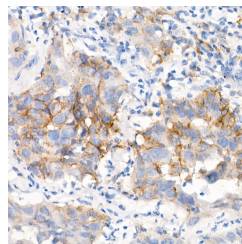
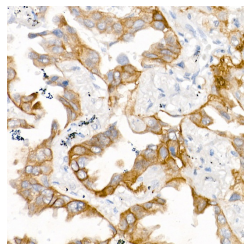
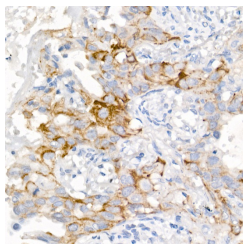
<b>Product Type</b>	Primary antibodies
<b>Short Description</b>	
<b>Applications</b>	WB/IHC-P/ELISA
<b>Host/Source</b>	Rabbit
<b>Reactivity</b>	Human/Mouse

### PRODUCT PROPERTIES

<b>Clonality</b>	Monoclonal
<b>Clone ID</b>	S9MR
<b>Concentration</b>	Lot specific
<b>Conjugation</b>	Unconjugated
<b>Purification</b>	Affinity purification
<b>Dilution Range</b>	WB:1:500-1:2000 IHC-P:1:50-1:200 ELISA:Recommended starting concentration is 1 µg/mL. Please optimize the concentration based on your specific assay requirements.
<b>Formulation</b>	PBS with 0.02% Sodium Azide, 0.05% BSA, 50% Glycerol, pH 7.3.
<b>Isotype</b>	IgG
<b>Storage Instruction</b>	Store at -20°C for up to 1 year from the date of receipt, and avoid repeat freeze-thaw cycles.

### TARGET INFORMATION

<b>Gene ID</b>	1956
<b>Gene Symbol</b>	EGFR
<b>Uniprot ID</b>	EGFR_HUMAN
<b>Immunogen</b>	
<b>Immunogen Region</b>	800-900
<b>Specificity</b>	A synthetic peptide corresponding to a sequence within amino acids 800-900 of human EGFR (L858R) (P00533).
<b>Immunogen Sequence</b>	DYVREHKDNIGSQYLLNWCV QIAKGMNYLEDRLVHRDLA ARNLVKTPQHVKITDFGLA KLLGAEEKEYHAEGGKVPKIK WMALESILHRIYTHQSDVWS Y



Immunohistochemistry analysis of paraffin-embedded Human lung adenocarcinoma (egfr-858r positive sample) using EGFR (L858R) Rabbit monoclonal antibody (STJ11102229) at dilution of 1:100 (40x lens). Perform high pressure antigen retrieval with 10 mM citrate buffer pH 6.0 before commencing with immunohistochemistry staining protocol.

Immunohistochemistry analysis of paraffin-embedded Human lung adenocarcinoma (egfr-8745-a750del positive sample) using EGFR (L858R) Rabbit monoclonal antibody (STJ11102229) at dilution of 1:100 (40x lens). Perform high pressure antigen retrieval with 10 mM citrate buffer pH 6.0 before commencing with immunohistochemistry staining protocol.