

## Anti-DDB1 antibody (1041-1140) [S4MR] (STJ11102224)

STJ11102224

### GENERAL INFORMATION

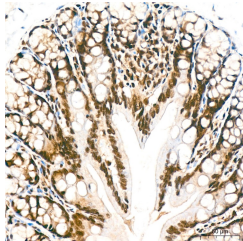
<b>Product Type</b>	Primary antibodies
<b>Short Description</b>	
<b>Applications</b>	WB/IHC-P/ELISA
<b>Host/Source</b>	Rabbit
<b>Reactivity</b>	Human/Mouse/Rat

### PRODUCT PROPERTIES

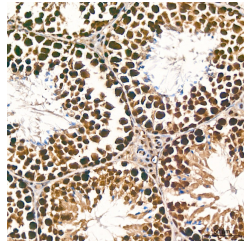
<b>Clonality</b>	Monoclonal
<b>Clone ID</b>	S4MR
<b>Concentration</b>	Lot specific
<b>Conjugation</b>	Unconjugated
<b>Purification</b>	Affinity purification
<b>Dilution Range</b>	WB:1:500-1:2000 IHC-P:1:500-1:1000 ELISA:Recommended starting concentration is 1 Mu g/mL. Please optimize the concentration based on your specific assay requirements.
<b>Formulation</b>	PBS with 0.02% Sodium Azide, 0.05% BSA, 50% Glycerol, pH 7.3.
<b>Isotype</b>	IgG
<b>Storage Instruction</b>	Store at-20°C for up to 1 year from the date of receipt, and avoid repeat freeze-thaw cycles.

### TARGET INFORMATION

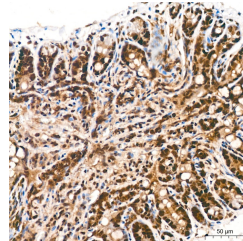
<b>Gene ID</b>	1642
<b>Gene Symbol</b>	DDB1
<b>Uniprot ID</b>	DDB1_HUMAN
<b>Immunogen</b>	
<b>Immunogen Region</b>	1041-1140
<b>Specificity</b>	A synthetic peptide corresponding to a sequence within amino acids 1041-1140 of human DDB1 (NP_001914.3).
<b>Immunogen Sequence</b>	TLSSESWYNLLDQMQLNK VIKSVGKIEHSFWRSFHTER KTEPATGFIDGDLIESFLDI SRPKMQEVDVANLQYDDGSGM KREATADDLIKVVEELTRIH



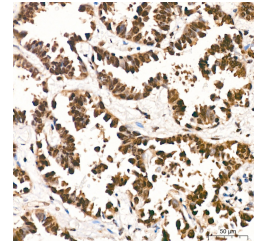
Immunohistochemistry analysis of DDB1 in paraffin-embedded rat colon tissue using DDB1 Rabbit monoclonal antibody (STJ11102224) at a dilution of 1:800 (40x lens). High pressure antigen retrieval was performed with 0.01 M Tris-EDTA buffer (pH 9.0) prior to immunohistochemistry staining.



Immunohistochemistry analysis of DDB1 in paraffin-embedded mouse testis tissue using DDB1 Rabbit monoclonal antibody (STJ11102224) at a dilution of 1:800 (40x lens). High pressure antigen retrieval was performed with 0.01 M Tris-EDTA buffer (pH 9.0) prior to immunohistochemistry staining.



Immunohistochemistry analysis of DDB1 in paraffin-embedded mouse colon tissue using DDB1 Rabbit monoclonal antibody (STJ11102224) at a dilution of 1:800 (40x lens). High pressure antigen retrieval was performed with 0.01 M Tris-EDTA buffer (pH 9.0) prior to immunohistochemistry staining.



Immunohistochemistry analysis of DDB1 in paraffin-embedded Human lung adenocarcinoma tissue using DDB1 Rabbit monoclonal antibody (STJ11102224) at a dilution of 1:800 (40x lens). High pressure antigen retrieval was performed with 0.01 M Tris-EDTA buffer (pH 9.0) prior to immunohistochemistry staining.

This product is suitable for in-vitro studies under the RESEARCH USE ONLY [RUO] licence. This product must not be used as for diagnostic or other medical purposes.  
St John's Laboratory Ltd, Knowledge Dock Business Centre, University Way, London, E16 2RD | Tel: 0208 223 3081