

Anti-MCM5 antibody (635-734) [S0MR] (STJ11102220)
STJ11102220

GENERAL INFORMATION

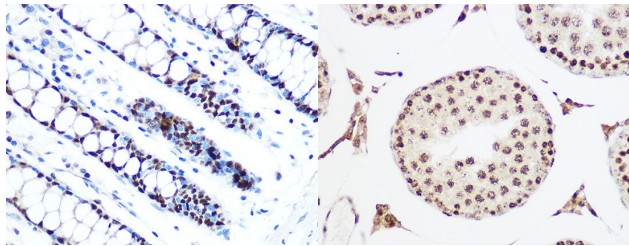
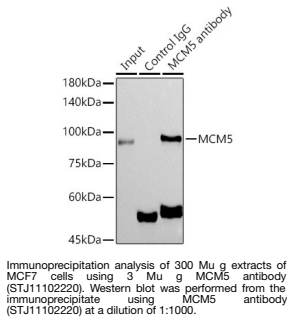
Product Type	Primary antibodies
Short Description	
Applications	WB/IHC-P/IP/ELISA
Host/Source	Rabbit
Reactivity	Human/Mouse/Rat

PRODUCT PROPERTIES

Clonality	Monoclonal
Clone ID	S0MR
Concentration	Lot specific
Conjugation	Unconjugated
Purification	Affinity purification
Dilution Range	WB:1:500-1:2000 IHC-P:1:50-1:200 IP:0.5 Mu g-4 Mu g antibody for 200 Mu g-400 Mu g extracts of whole cells ELISA:Recommended starting concentration is 1 Mu g/mL. Please optimize the concentration based on your specific assay requirements.
Formulation	PBS with 0.02% Sodium Azide, 0.05% BSA, 50% Glycerol, pH 7.3.
Isotype	IgG
Storage Instruction	Store at -20°C for up to 1 year from the date of receipt, and avoid repeat freeze-thaw cycles.

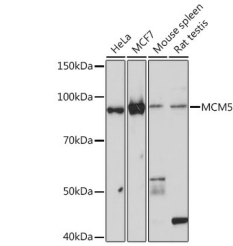
TARGET INFORMATION

Gene ID	4174
Gene Symbol	MCM5
Uniprot ID	MCM5_HUMAN
Immunogen	
Immunogen Region	635-734
Specificity	A synthetic peptide corresponding to a sequence within amino acids 635-734 of human MCM5 (P33992).
Immunogen Sequence	ADVVEALRLFQVSTLDAALS GTLSGVEGFTSQEDQEMLSR IEKQLKRRFAIGSQVSEHSI IKDFTKQKYPEHAHKVLQL MLRRGEIQHRMQRKVLYRLK



Immunohistochemistry analysis of MCM5 in paraffin-embedded human colon using MCM5 Rabbit monoclonal antibody (STJ11102220) at dilution of 1:100 (40x lens). Perform microwave antigen retrieval with 10 mM PBS buffer pH 7.2 before commencing with immunohistochemistry staining protocol.

Immunohistochemistry analysis of MCM5 in paraffin-embedded rat testis using MCM5 Rabbit monoclonal antibody (STJ11102220) at dilution of 1:100 (40x lens). Perform microwave antigen retrieval with 10 mM PBS buffer pH 7.2 before commencing with immunohistochemistry staining protocol.



Western blot analysis of various lysates using MCM5 Rabbit monoclonal antibody (STJ11102220) at 1:1000 dilution. Secondary antibody: HRP Goat Anti-Rabbit IgG (H+L) (STJS000856) at 1:10000 dilution. Lysates/proteins: 25 Mu g per lane. Blocking buffer: 3% nonfat dry milk in TBST. Detection: ECL Basic Kit. Exposure time: 90s.

This product is suitable for in-vitro studies under the RESEARCH USE ONLY [RUO] licence. This product must not be used as for diagnostic or other medical purposes.
St John's Laboratory Ltd, Knowledge Dock Business Centre, University Way, London, E16 2RD | Tel: 0208 223 3081