

Anti-OGG1 antibody (246-345) [S6MR] (STJ11102216)

STJ11102216

GENERAL INFORMATION

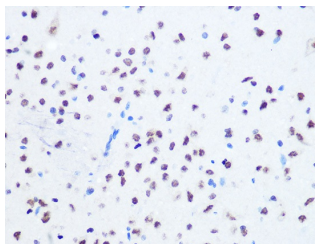
Product Type	Primary antibodies
Short Description	
Applications	WB/IHC-P/ELISA
Host/Source	Rabbit
Reactivity	Human/Mouse/Rat

PRODUCT PROPERTIES

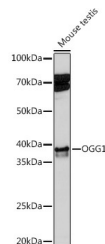
Clonality	Monoclonal
Clone ID	S6MR
Concentration	Lot specific
Conjugation	Unconjugated
Purification	Affinity purification
Dilution Range	WB:1:500-1:2000 IHC-P:1:100-1:1000 ELISA:Recommended starting concentration is 1 Mu g/mL. Please optimize the concentration based on your specific assay requirements.
Formulation	PBS with 0.02% Sodium Azide, 0.05% BSA, 50% Glycerol, pH 7.3.
Isotype	IgG
Storage Instruction	Store at -20°C for up to 1 year from the date of receipt, and avoid repeat freeze-thaw cycles.

TARGET INFORMATION

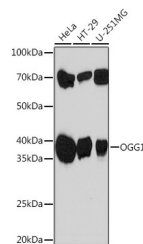
Gene ID	4968
Gene Symbol	OGG1
Uniprot ID	OGG1_HUMAN
Immunogen	
Immunogen Region	246-345
Specificity	A synthetic peptide corresponding to a sequence within amino acids 246-345 of human OGG1 (O15527).
Immunogen Sequence	VGTKVADCICLMALDKPQAV PVDVHMWHIAQRDYSWHPPTT SQAKGPSQTNKELGNFFRS LWGPYAGWAQAVLFSADLRQ SRHAQEPPAKRRKGSGGPEG



Immunohistochemistry analysis of OGG1 in paraffin-embedded rat brain using OGG1 Rabbit monoclonal antibody (STJ11102216) at dilution of 1:100 (40x lens). Perform microwave antigen retrieval with 10 mM PBS buffer pH 7.2 before commencing with immunohistochemistry staining protocol.



Western blot analysis of lysates from Mouse testis, using OGG1 Rabbit monoclonal antibody (STJ11102216) at 1:1000 dilution. Secondary antibody: HRP Goat Anti-Rabbit IgG (H+L) (STJS000856) at 1:10000 dilution. Lysates/proteins: 25 Mu.g per lane. Blocking buffer: 3% nonfat dry milk in TBST. Detection: ECL Enhanced Kit. Exposure time: 3min.



Western blot analysis of various lysates using OGG1 Rabbit monoclonal antibody (STJ11102216) at 1:1000 dilution. Secondary antibody: HRP Goat Anti-Rabbit IgG (H+L) (STJS000856) at 1:10000 dilution. Lysates/proteins: 25 Mu.g per lane. Blocking buffer: 3% nonfat dry milk in TBST. Detection: ECL Basic Kit. Exposure time: 90s.

This product is suitable for in-vitro studies under the RESEARCH USE ONLY [RUO] licence. This product must not be used as for diagnostic or other medical purposes.
St John's Laboratory Ltd, Knowledge Dock Business Centre, University Way, London, E16 2RD | Tel: 0208 223 3081