

Anti-CYCS antibody (1-105) [S4MR] (STJ11102194)
STJ11102194

GENERAL INFORMATION

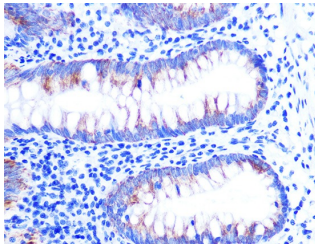
Product Type	Primary antibodies
Short Description	
Applications	WB/IHC-P/ELISA
Host/Source	Rabbit
Reactivity	Human/Mouse/Rat

PRODUCT PROPERTIES

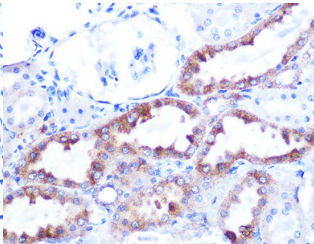
Clonality	Monoclonal
Clone ID	S4MR
Concentration	Lot specific
Conjugation	Unconjugated
Purification	Affinity purification
Dilution Range	WB:1:1000-1:6000 IHC-P:1:500-1:2000 ELISA:Recommended starting concentration is 1 Mu g/mL. Please optimize the concentration based on your specific assay requirements.
Formulation	PBS with 0.02% Sodium Azide, 0.05% BSA, 50% Glycerol, pH 7.3.
Isotype	IgG
Storage Instruction	Store at -20°C for up to 1 year from the date of receipt, and avoid repeat freeze-thaw cycles.

TARGET INFORMATION

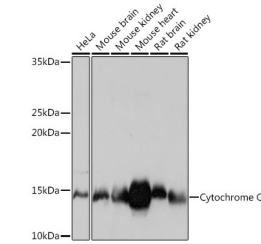
Gene ID	54205
Gene Symbol	CYCS
Uniprot ID	CYC_HUMAN
Immunogen	
Immunogen Region	1-105
Specificity	A synthetic peptide corresponding to a sequence within amino acids 1-105 of human Cytochrome C (P99999).
Immunogen Sequence	MGDVEKGKKIFIMKCSQCHT VEKGGKHKTGPNLHGLFGRK TQAPGYSYTAANKNKGIW GEDTLMEYLENPKKIIPGTK MIFVGIKKKEERADLIAYLK KATNE



Immunohistochemistry analysis of Cytochrome C in paraffin-embedded human appendix using Cytochrome C Rabbit monoclonal antibody (STJ11102194) at dilution of 1:100 (40x lens). Perform microwave antigen retrieval with 10 mM PBS buffer pH 7.2 before commencing with immunohistochemistry staining protocol.



Immunohistochemistry analysis of Cytochrome C in paraffin-embedded rat kidney using Cytochrome C Rabbit monoclonal antibody (STJ11102194) at dilution of 1:100 (40x lens). Perform microwave antigen retrieval with 10 mM PBS buffer pH 7.2 before commencing with immunohistochemistry staining protocol.



Western blot analysis of various lysates using Cytochrome C Rabbit monoclonal antibody (STJ11102194) at 1:1000 dilution. Secondary antibody: HRP Goat Anti-Rabbit IgG (H+L) (STJS000856) at 1:10000 dilution. Lysates/proteins: 25 Mu g per lane. Blocking buffer: 3% nonfat dry milk in TBST. Detection: ECL Basic Kit. Exposure time: 10s.

This product is suitable for in-vitro studies under the RESEARCH USE ONLY [RUO] licence. This product must not be used as for diagnostic or other medical purposes.
St John's Laboratory Ltd, Knowledge Dock Business Centre, University Way, London, E16 2RD | Tel: 0208 223 3081