

**Anti-KIF23 antibody (801-960) [S7MR] (STJ11102187)**

STJ11102187

**GENERAL INFORMATION**

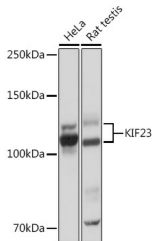
<b>Product Type</b>	Primary antibodies
<b>Short Description</b>	
<b>Applications</b>	WB/IP/ELISA
<b>Host/Source</b>	Rabbit
<b>Reactivity</b>	Human/Rat

**PRODUCT PROPERTIES**

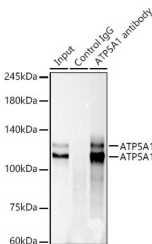
<b>Clonality</b>	Monoclonal
<b>Clone ID</b>	S7MR
<b>Concentration</b>	Lot specific
<b>Conjugation</b>	Unconjugated
<b>Purification</b>	Affinity purification
<b>Dilution</b>	WB:1:500-1:1000
<b>Range</b>	IP:0.5 Mu g-4 Mu g antibody for 200 Mu g-400 Mu g extracts of whole cells ELISA:Recommended starting concentration is 1 Mu g/mL. Please optimize the concentration based on your specific assay requirements.
<b>Formulation</b>	PBS with 0.02% Sodium Azide, 0.05% BSA, 50% Glycerol, pH 7.3.
<b>Isotype</b>	IgG
<b>Storage Instruction</b>	Store at -20°C for up to 1 year from the date of receipt, and avoid repeat freeze-thaw cycles.

**TARGET INFORMATION**

<b>Gene ID</b>	9493
<b>Gene Symbol</b>	KIF23
<b>Uniprot ID</b>	KIF23_HUMAN
<b>Immunogen</b>	
<b>Immunogen Region</b>	801-960
<b>Specificity</b>	Recombinant fusion protein containing a sequence corresponding to amino acids 801-960 of human KIF23 (Q02241).
<b>Immunogen Sequence</b>	NAPPRLRHRRSRSGDRWV DHKPSANMQTETVMQPHVPH AITVSVANEKALAKCEKYML THQELASDGEIETKLIKDI YKTRGGGQSVQFTDIETLKQ ESPNGSRKRSSVAPAQPD GAESWTDVETRCVAVEMR AGSQLGPGYQHHAQPKRKKP



Western blot analysis of extracts of various cell lines, using KIF23 rabbit monoclonal antibody (STJ11102187) at 1:1000 dilution. Secondary antibody: HRP Goat Anti-rabbit IgG (H+L) (STJS000856) at 1:10000 dilution. Lysates/proteins: 25 Mu g per lane. Blocking buffer: 3% non-fat dry milk in TBST. Detection: ECL Basic Kit. Exposure time: 10s.



Immunoprecipitation analysis of 300 Mu g extracts of HeLa cells using 3 Mu g KIF23 antibody (STJ11102187). Western blot was performed from the immunoprecipitate using KIF23 antibody (STJ11102187) at a dilution of 1:1000.

This product is suitable for in-vitro studies under the RESEARCH USE ONLY [RUO] licence. This product must not be used as for diagnostic or other medical purposes.  
St John's Laboratory Ltd, Knowledge Dock Business Centre, University Way, London, E16 2RD | Tel: 0208 223 3081