

Anti-MS4A1 antibody (100-200) [S5MR] (STJ11102185)

STJ11102185

GENERAL INFORMATION

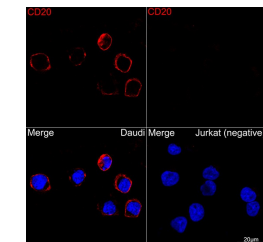
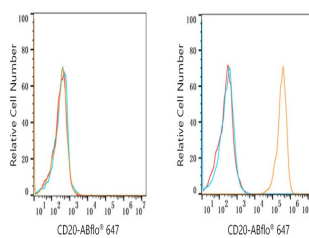
Product Type	Primary antibodies
Short Description	
Applications	WB/IHC-P/IF/ICC/FC/ELISA
Host/Source	Rabbit
Reactivity	Human

PRODUCT PROPERTIES

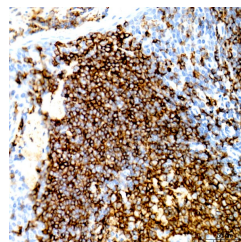
Clonality	Monoclonal
Clone ID	S5MR
Concentration	Lot specific
Conjugation	Unconjugated
Purification	Affinity purification
Dilution Range	WB:1:500-1:1000 IHC-P:1:2000-1:10000 IF/ICC:1:800-1:3200 FC:1:50-1:200 ELISA:Recommended starting concentration is 1 μ g/mL. Please optimize the concentration based on your specific assay requirements.
Formulation	PBS with 0.05% Proclin300, 0.05% BSA, 50% Glycerol, pH 7.3.
Isotype	IgG
Storage Instruction	Store at -20°C for up to 1 year from the date of receipt, and avoid repeat freeze-thaw cycles.

TARGET INFORMATION

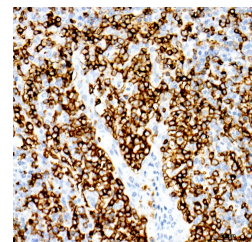
Gene ID	931
Gene Symbol	MS4A1
Uniprot ID	CD20_HUMAN
Immunogen	
Immunogen Region	100-200
Specificity	A synthetic peptide corresponding to a sequence within amino acids 100-200 of human CD20 (NP_068769.2).
Immunogen Sequence	LLAATEKNSRKCLVKGKMIM NSLSLFAAISGMILSIMDIL NIKISHFLKMESLNFIRAHT PYINIYNCEPANPSEKNSPS
Sequence	TYQCYSIQSLFLGILSVMLI F



Flow cytometry: 1×10^6 Jurkat cells (negative control, left) and Daudi cells (right) were surface-stained with CD20 Rabbit monoclonal antibody (STJ1102185, 10 μ g/mL orange line) or ABR0 647 Rabbit IgG isotype control (10 μ g/mL, blue line). Non-fluorescently stained cells were used as blank control (red line).



Confocal imaging of Daudi and Jurkat (Negative control) cells using CD20 Rabbit monoclonal antibody (STJ1102185, dilution 1:1000) (Red). DAPI was used for nuclear staining (blue). Objective: 100x.



Immunohistochemistry analysis of paraffin-embedded human tonsil using CD20 Rabbit monoclonal antibody (STJ1102185) at dilution of 1:8000 (40x lens). Perform high pressure antigen retrieval with 10 mM citrate buffer pH 6.0 before commencing with immunohistochemistry staining protocol.

This product is suitable for in-vitro studies under the RESEARCH USE ONLY [RUO] licence. This product must not be used as for diagnostic or other medical purposes.
St John's Laboratory Ltd, Knowledge Dock Business Centre, University Way, London, E16 2RD | Tel: 0208 223 3081