

Anti-TUBB2A/TUBB2B antibody (346-445) [S7MR] (STJ11102157)

STJ11102157

GENERAL INFORMATION

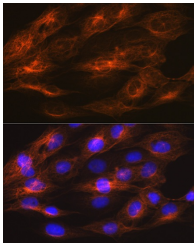
Product Type	Primary antibodies
Short Description	
Applications	WB/IHC-P/IF/ICC/ELISA
Host/Source	Rabbit
Reactivity	Human/Mouse/Rat

PRODUCT PROPERTIES

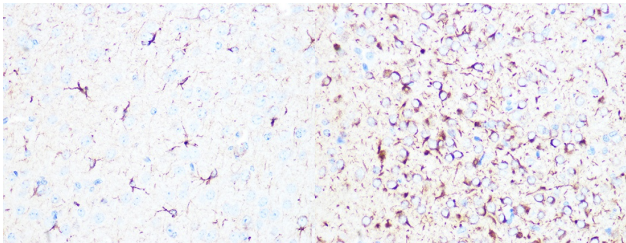
Clonality	Monoclonal
Clone ID	S7MR
Concentration	Lot specific
Conjugation	Unconjugated
Purification	Affinity purification
Dilution Range	WB:1:500-1:1000 IHC-P:1:50-1:200 IF/ICC:1:50-1:200 ELISA:Recommended starting concentration is 1 Mu g/mL. Please optimize the concentration based on your specific assay requirements.
Formulation	PBS with 0.02% Sodium Azide, 0.05% BSA, 50% Glycerol, pH 7.3.
Isotype	IgG
Storage Instruction	Store at -20°C for up to 1 year from the date of receipt, and avoid repeat freeze-thaw cycles.

TARGET INFORMATION

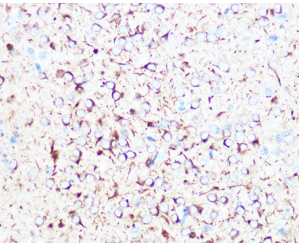
Gene ID	347733 7280
Gene Symbol	TUBB2B TUBB2A
Uniprot ID	TBB2B_HUMAN TBB2A_HUMAN
Immunogen	346-445
Region	
Specificity	A synthetic peptide corresponding to a sequence within amino acids 346-445 of human Beta II-Tubulin/Beta 2-Tubulin (Q13885).
Immunogen Sequence	PNNVKTAVCDIPRGLKMSA TFIGNSTAIQELFKRISEQF TAMFRRKAFLHWYTGEGMDE MEFTAESNMNDLVSEYQQY QDATADEQGEFEFEEGEDEA



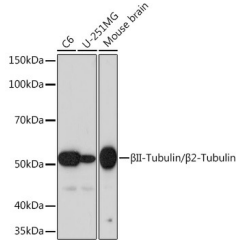
Immunofluorescence analysis of C6 cells using Beta II-Tubulin/Beta 2-Tubulin Rabbit monoclonal antibody (STJ11102157) at dilution of 1:100 (40x lens). Blue: DAPI for nuclear staining.



Immunohistochemistry analysis of paraffin-embedded mouse brain using Beta II-Tubulin/Beta 2-Tubulin Rabbit monoclonal antibody (STJ11102157) at dilution of 1:100 (40x lens). Perform microwave antigen retrieval with 10 mM PBS buffer pH 7.2 before commencing with immunohistochemistry staining protocol.



Immunohistochemistry analysis of paraffin-embedded rat brain using Beta II-Tubulin/Beta 2-Tubulin Rabbit monoclonal antibody (STJ11102157) at dilution of 1:100 (40x lens). Perform microwave antigen retrieval with 10 mM PBS buffer pH 7.2 before commencing with immunohistochemistry staining protocol.



Western blot analysis of extracts of various cell lines, using Beta II-Tubulin/Beta 2-Tubulin Rabbit monoclonal antibody (STJ11102157) at 1:1000 dilution. Secondary antibody: HRP Goat Anti-Rabbit IgG (H+L) (STJS000856) at 1:10000 dilution. Lysates/proteins: 25 Mu g per lane. Blocking buffer: 3% nonfat dry milk in TBST. Detection: ECL Basic Kit. Exposure time: 60s.

This product is suitable for in-vitro studies under the RESEARCH USE ONLY [RUO] licence. This product must not be used as for diagnostic or other medical purposes.
St John's Laboratory Ltd, Knowledge Dock Business Centre, University Way, London, E16 2RD | Tel: 0208 223 3081