

Anti-MAPK1/MAPK3 antibody (180-360) [S4MR] (STJ11102154)

STJ11102154

GENERAL INFORMATION

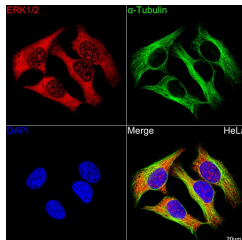
Product Type	Primary antibodies
Short Description	
Applications	WB/IHC-P/IF/ICC/ELISA
Host/Source	Rabbit
Reactivity	Human/Mouse/Rat

PRODUCT PROPERTIES

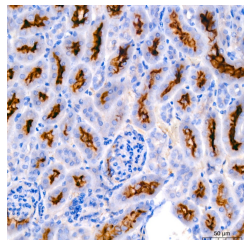
Clonality	Monoclonal
Clone ID	S4MR
Concentration	Lot specific
Conjugation	Unconjugated
Purification	Affinity purification
Dilution	WB:1:1000-1:6000
Range	IHC-P:1:200-1:2000 IF/ICC:1:50-1:200 ELISA:Recommended starting concentration is 1 Mu g/mL. Please optimize the concentration based on your specific assay requirements.
Formulation	PBS with 0.05% Proclin300, 0.05% BSA, 50% Glycerol, pH 7.3.
Isotype	IgG
Storage	Store at -20°C for up to 1 year from the date of receipt, and avoid repeat freeze-thaw cycles.
Instruction	

TARGET INFORMATION

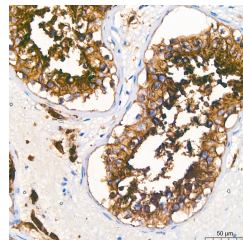
Gene ID	5594 5595
Gene Symbol	MAPK1 MAPK3
Uniprot ID	MK01_HUMAN MK03_HUMAN
Immunogen	
Immunogen Region	180-360
Specificity	Recombinant fusion protein containing a sequence corresponding to amino acids 180-360 of human ERK2 (P28482).
Immunogen Sequence	HTGFLTEYVATRWYRAPEIM LNSKGYTKSIDWSVGCILA EMLSNRPIFPGKHYLDQLNH ILGILGSPSQEDLNCIINLK ARNYLLSLPHKNKVPWNRLF PNADSKALDLLDKMLTFNPH KRIEVEQALAHPLYLEQYYDP SDEPIAEAPFKFDMELDDLDP KEKLELIFEETARFQPGYR S



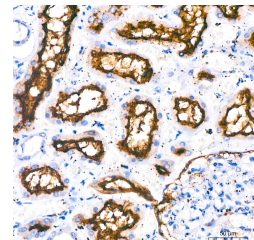
Confocal imaging of HeLa cells using ERK1/2 Rabbit monoclonal antibody (STJ11102154, dilution 1:50) (Red). The cells were counterstained with Alpha-Tubulin Mouse monoclonal antibody (dilution 1:400) (Green). DAPI was used for nuclear staining (blue). Objective: 100x.



Immunohistochemistry analysis of paraffin-embedded mouse kidney using ERK1/2 Rabbit monoclonal antibody (STJ11102154) at dilution of 1:200 (40x lens). Perform high pressure antigen retrieval with 10 mM citrate buffer pH 6.0 before commencing with immunohistochemistry staining protocol.



Immunohistochemistry analysis of paraffin-embedded human testis using ERK1/2 Rabbit monoclonal antibody (STJ11102154) at dilution of 1:200 (40x lens). Perform high pressure antigen retrieval with 10 mM citrate buffer pH 6.0 before commencing with immunohistochemistry staining protocol.



Immunohistochemistry analysis of paraffin-embedded human kidney using ERK1/2 Rabbit monoclonal antibody (STJ11102154) at dilution of 1:200 (40x lens). Perform high pressure antigen retrieval with 10 mM citrate buffer pH 6.0 before commencing with immunohistochemistry staining protocol.

This product is suitable for in-vitro studies under the RESEARCH USE ONLY [RUO] licence. This product must not be used as for diagnostic or other medical purposes.
St John's Laboratory Ltd, Knowledge Dock Business Centre, University Way, London, E16 2RD | Tel: 0208 223 3081