

Anti-MUC2 antibody (5000-5100) [S1MR] (STJ11102151)
STJ11102151

GENERAL INFORMATION

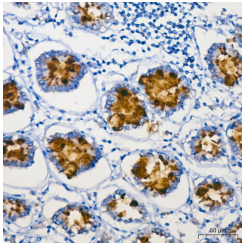
Product Type	Primary antibodies
Short Description	
Applications	WB/IHC-P/ELISA
Host/Source	Rabbit
Reactivity	Human/Mouse/Rat

PRODUCT PROPERTIES

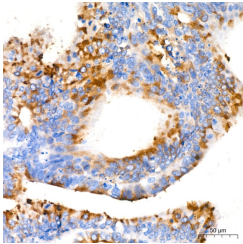
Clonality	Monoclonal
Clone ID	S1MR
Concentration	Lot specific
Conjugation	Unconjugated
Purification	Affinity purification
Dilution Range	WB:1:1000-1:2000 IHC-P:1:500-1:2000 ELISA:Recommended starting concentration is 1 Mu g/mL. Please optimize the concentration based on your specific assay requirements.
Formulation	PBS with 0.02% Sodium Azide, 0.05% BSA, 50% Glycerol, pH 7.3.
Isotype	IgG
Storage Instruction	Store at -20°C for up to 1 year from the date of receipt, and avoid repeat freeze-thaw cycles.

TARGET INFORMATION

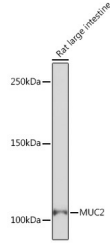
Gene ID	4583
Gene Symbol	MUC2
Uniprot ID	MUC2_HUMAN
Immunogen	
Immunogen Region	5000-5100
Specificity	A synthetic peptide corresponding to a sequence within amino acids 5000-5100 of human MUC2 (Q02817).
Immunogen Sequence	PDNQHVILKPGDFKSDPKNN CTFFSCVKIHNLISVSNI TCPNFDASICIPGSITFMPN GCCKTCTPRNETRVPCSTVP VTTEVSYAGCTKTVLMNHCS G



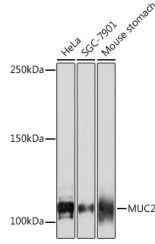
Immunohistochemistry analysis of MUC2 in paraffin-embedded human colon using MUC2 Rabbit monoclonal antibody (STJ11102151) at dilution of 1:500 (40x lens). Perform high pressure antigen retrieval with 10 mM citrate buffer pH 6.0 before commencing with immunohistochemistry staining protocol.



Immunohistochemistry analysis of MUC2 in paraffin-embedded human colon carcinoma using MUC2 Rabbit monoclonal antibody (STJ11102151) at dilution of 1:500 (40x lens). Perform high pressure antigen retrieval with 10 mM citrate buffer pH 6.0 before commencing with immunohistochemistry staining protocol.



Western blot analysis of lysates from Rat large intestine, using MUC2 Rabbit monoclonal antibody (STJ11102151) at 1:1000 dilution. Secondary antibody: HRP Goat Anti-Rabbit IgG (H+L) (STJS000856) at 1:10000 dilution. Lysates/proteins: 25 Mu g per lane. Blocking buffer: 3% nonfat dry milk in TBST. Detection: ECL Enhanced Kit. Exposure time: 3min.



Western blot analysis of various lysates using MUC2 Rabbit monoclonal antibody (STJ11102151) at 1:1000 dilution. Secondary antibody: HRP Goat Anti-Rabbit IgG (H+L) (STJS000856) at 1:10000 dilution. Lysates/proteins: 25 Mu g per lane. Blocking buffer: 3% nonfat dry milk in TBST. Detection: ECL Basic Kit. Exposure time: 90s.

This product is suitable for in-vitro studies under the RESEARCH USE ONLY [RUO] licence. This product must not be used as for diagnostic or other medical purposes.
St John's Laboratory Ltd, Knowledge Dock Business Centre, University Way, London, E16 2RD | Tel: 0208 223 3081