

**Anti-PLIN1 antibody (400-500) [S9MR] (STJ11102149)**  
STJ11102149

**GENERAL INFORMATION**

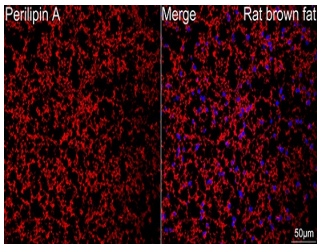
<b>Product Type</b>	Primary antibodies
<b>Short Description</b>	
<b>Applications</b>	WB/IHC-P/IF/ICC/ELISA
<b>Host/Source</b>	Rabbit
<b>Reactivity</b>	Mouse/Rat

**PRODUCT PROPERTIES**

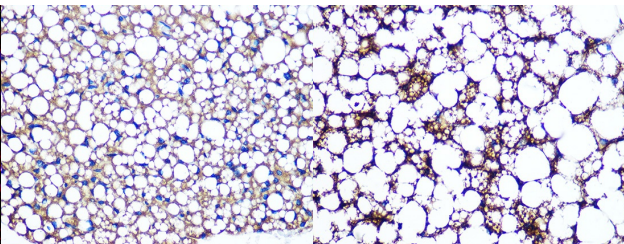
<b>Clonality</b>	Monoclonal
<b>Clone ID</b>	S9MR
<b>Concentration</b>	Lot specific
<b>Conjugation</b>	Unconjugated
<b>Purification</b>	Affinity purification
<b>Dilution Range</b>	WB:1:500-1:1000 IHC-P:1:100-1:1000 IF/ICC:1:100-1:400 ELISA:Recommended starting concentration is 1 Mu g/mL. Please optimize the concentration based on your specific assay requirements.
<b>Formulation</b>	PBS with 0.02% Sodium Azide, 0.05% BSA, 50% Glycerol, pH 7.3.
<b>Isotype</b>	IgG
<b>Storage Instruction</b>	Store at -20°C for up to 1 year from the date of receipt, and avoid repeat freeze-thaw cycles.

**TARGET INFORMATION**

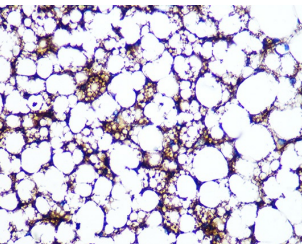
<b>Gene ID</b>	5346
<b>Gene Symbol</b>	PLIN1
<b>Uniprot ID</b>	PLIN1_HUMAN
<b>Immunogen</b>	
<b>Immunogen Region</b>	400-500
<b>Specificity</b>	A synthetic peptide corresponding to a sequence within amino acids 400-500 of human Perilipin A (O60240).
<b>Immunogen Sequence</b>	HYVPLPRLSLMEPESEFRDI DNPPAEVERREAERRASGAP SAGPEPAPRLAQPRRLRSA QSPGAPPGPGLEDEVATPAA PRPGFPAVPREKPKRRVSDS F



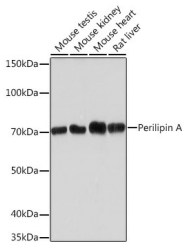
Confocal imaging of A paraffin-embedded Rat brown fat tissue using A Perilipin A Rabbit monoclonal antibody (STJ11102149, dilution 1:100) followed by a further incubation with Cy3 Goat Anti-Rabbit IgG (H+L) (dilution 1:500) (Red). DAPI was used for nuclear staining (Blue). Objective: 40x. Perform high pressure antigen retrieval with 0.01 M citrate buffer (pH 6.0) prior to IF staining.



Immunohistochemistry analysis of Perilipin A in paraffin-embedded mouse brown adipose using Perilipin A Rabbit monoclonal antibody (STJ11102149) at dilution of 1:100 (40x lens). Perform microwave antigen retrieval with 10 mM PBS buffer pH 7.2 before commencing with immunohistochemistry staining protocol.



Immunohistochemistry analysis of Perilipin A in paraffin-embedded rat brown adipose using Perilipin A Rabbit monoclonal antibody (STJ11102149) at dilution of 1:100 (40x lens). Perform microwave antigen retrieval with 10 mM PBS buffer pH 7.2 before commencing with immunohistochemistry staining protocol.



Western blot analysis of various lysates using Perilipin A Rabbit monoclonal antibody (STJ11102149) at 1:1000 dilution. Secondary antibody: HRP Goat Anti-Rabbit IgG (H+L) (STJ500055) at 1:10000 dilution. Lysates/proteins: 25 Mu g per lane. Blocking buffer: 3% nonfat dry milk in TBST. Detection: ECL Basic Kit. Exposure time: 3min.

This product is suitable for in-vitro studies under the RESEARCH USE ONLY [RUO] licence. This product must not be used as for diagnostic or other medical purposes.  
St John's Laboratory Ltd, Knowledge Dock Business Centre, University Way, London, E16 2RD | Tel: 0208 223 3081