

Anti-KDM5A antibody (1400-1690) [S7MR] (STJ11102147)
STJ11102147

GENERAL INFORMATION

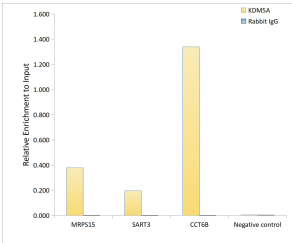
Product Type	Primary antibodies
Short Description	
Applications	WB/IP/ELISA/ChIP
Host/Source	Rabbit
Reactivity	Human/Mouse/Rat

PRODUCT PROPERTIES

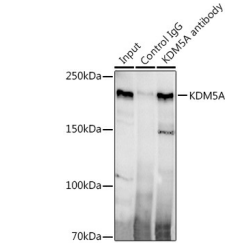
Clonality	Monoclonal
Clone ID	S7MR
Concentration	Lot specific
Conjugation	Unconjugated
Purification	Affinity purification
Dilution	WB:1:500-1:2000
Range	IP:0.5 Mu g-4 Mu g antibody for 200 Mu g-400 Mu g extracts of whole cells ELISA:Recommended starting concentration is 1 Mu g/mL. Please optimize the concentration based on your specific assay requirements. ChIP:2 Mu g anti
Formulation	PBS with 0.02% Sodium Azide, 0.05% BSA, 50% Glycerol, pH 7.3.
Isotype	IgG
Storage	Store at -20°C for up to 1 year from the date of receipt, and avoid repeat freeze-thaw cycles.
Instruction	

TARGET INFORMATION

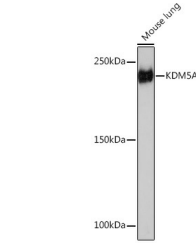
Gene ID	5927
Gene Symbol	KDM5A
Uniprot ID	KDM5A_HUMAN
Immunogen	
Immunogen Region	1400-1690
Specificity	Recombinant fusion protein containing a sequence corresponding to amino acids 1400-1690 of human KDM5A (P29375).
Immunogen Sequence	HAYSSASKSCSQGSSTPRKQ PRKSPLVPRSLEPPVLELSP GAKAQLLEELMMVGDLLLEVSL DETQHIWRILQATHPPSEDR FLHIMEDDSMEEKPLKVKGK DSSEKKRKRKLEKVEQLFGE GKQKSKELKMDKPRKKKLK LGADKSKELNKLAKKLAKKEE ERKKKKKEKAAAKVELVKES TEKKREKKVLDIPSKYDWSG AEESDDENAVCAAQNCQRPCKDKVDWVQCDDGGCDEWFHQ



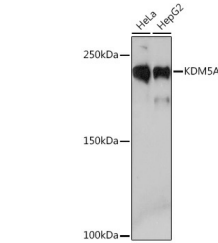
Chromatin immunoprecipitation analysis of extracts of HCT116 cells, using KDM5A antibody (STJ11102147) and rabbit IgG. The amount of immunoprecipitated DNA was checked by quantitative PCR. Histogram was constructed by the ratios of the immunoprecipitated DNA to the input.



Immunoprecipitation analysis of 300 Mu g extracts of HeLa cells using 3 Mu g KDM5A antibody (STJ11102147). Western blot was performed from the immunoprecipitate using KDM5A antibody (STJ11102147) at a dilution of 1:500.



Western blot analysis of lysates from Mouse lung, using KDM5A Rabbit monoclonal antibody (STJ11102147) at 1:1000 dilution. Secondary antibody: HRP Goat Anti-Rabbit IgG (H+L) (STJS000856) at 1:10000 dilution. Lysates/proteins: 25 Mu g per lane. Blocking buffer: 3% nonfat dry milk in TBST. Detection: ECL Enhanced Kit. Exposure time: 3min.



Western blot analysis of various lysates using KDM5A Rabbit monoclonal antibody (STJ11102147) at 1:1000 dilution. Secondary antibody: HRP Goat Anti-Rabbit IgG (H+L) (STJS000856) at 1:10000 dilution. Lysates/proteins: 25 Mu g per lane. Blocking buffer: 3% nonfat dry milk in TBST. Detection: ECL Basic Kit. Exposure time: 3min.

This product is suitable for in-vitro studies under the RESEARCH USE ONLY [RUO] licence. This product must not be used as for diagnostic or other medical purposes.
St John's Laboratory Ltd, Knowledge Dock Business Centre, University Way, London, E16 2RD | Tel: 0208 223 3081