

Anti-NUDC antibody (232-331) [S7MR] (STJ11102137)

STJ11102137

GENERAL INFORMATION

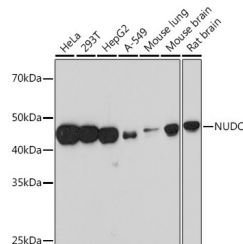
Product Type	Primary antibodies
Short Description	
Applications	WB/ELISA
Host/Source	Rabbit
Reactivity	Human/Mouse/Rat

PRODUCT PROPERTIES

Clonality	Monoclonal
Clone ID	S7MR
Concentration	Lot specific
Conjugation	Unconjugated
Purification	Affinity purification
Dilution Range	WB: 1:500-1:2000 ELISA: Recommended starting concentration is 1 µg/mL. Please optimize the concentration based on your specific assay requirements.
Formulation	PBS with 0.02% Sodium Azide, 0.05% BSA, 50% Glycerol, pH 7.3.
Isotype	IgG
Storage	Store at -20°C for up to 1 year from the date of receipt, and avoid repeat freeze-thaw cycles.
Instruction	

TARGET INFORMATION

Gene ID	10726
Gene Symbol	NUDC
Uniprot ID	NUDC_HUMAN
Immunogen	
Immunogen Region	232-331
Specificity	A synthetic peptide corresponding to a sequence within amino acids 232-331 of human NUDC (Q9Y266).
Immunogen Sequence	SWLIEDGKVVTVHLEKINKM EWWWSRLVSSDPEINTKKINP ENSKLSDLDSETRSMVEKMM YDQRQKSMGLPTSDEQKKQE ILKKFMDQHPMDFSKAKFN



Western blot analysis of various lysates, using NUDC Rabbit monoclonal antibody (STJ11102137) at 1:1000 dilution. Secondary antibody: HRP Goat Anti-Rabbit IgG (H+L) (STJ5000856) at 1:10000 dilution. Lysates/proteins: 25 µg per lane. Blocking buffer: 3% nonfat dry milk in TBST. Detection: ECL Basic Kit. Exposure time: 90s.

This product is suitable for in-vitro studies under the RESEARCH USE ONLY [RUO] licence. This product must not be used as for diagnostic or other medical purposes.
St John's Laboratory Ltd, Knowledge Dock Business Centre, University Way, London, E16 2RD | Tel: 0208 223 3081