

Anti-MTA2 antibody (569-668) [S9MR] (STJ11102119)

GENERAL INFORMATION

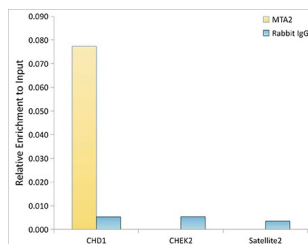
Product Type	Primary antibodies
Short Description	
Applications	WB/IHC-P/IF/ICC/ELISA/ChIP
Host/Source	Rabbit
Reactivity	Human

PRODUCT PROPERTIES

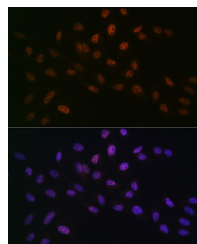
Clonality	Monoclonal
Clone ID	S9MR
Concentration	Lot specific
Conjugation	Unconjugated
Purification	Affinity purification
Dilution Range	WB:1:500-1:1000 IHC-P:1:50-1:200 IF/ICC:1:50-1:200 ELISA:Recommended starting concentration is 1 Mu g/mL. Please optimize the concentration based on your specific assay requirements. ChIP:5 Mu g antibody for 10 Mu g-15 Mu g of Chromat
Formulation	PBS with 0.02% Sodium Azide, 0.05% BSA, 50% Glycerol, pH 7.3.
Isotype	IgG
Storage Instruction	Store at -20°C for up to 1 year from the date of receipt, and avoid repeat freeze-thaw cycles.

TARGET INFORMATION

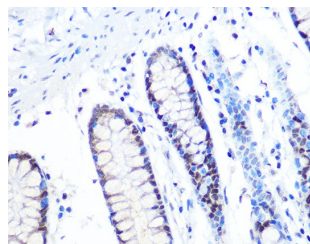
Gene ID	9219
Gene Symbol	MTA2
Uniprot ID	MTA2_HUMAN
Immunogen	
Immunogen Region	569-668
Specificity	A synthetic peptide corresponding to a sequence within amino acids 569-668 of human MTA2 (O94776). GVPFSSANGRPLASGIRSSSQ PAAKRQKLN PADAPNPVVFV ATKDTRALRKALHTLEMRRA ARRPNLPLKVKPTLIIVRPP
Immunogen Sequence	VPLPAPSHPASTNEPIVLED



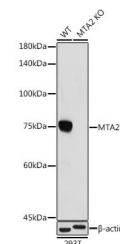
Chromatin immunoprecipitation analysis of extracts of HeLa cells, using MTA2 antibody (STJ11102119) and rabbit IgG. The amount of immunoprecipitated DNA was checked by quantitative PCR. Histogram was constructed by the ratios of the immunoprecipitated DNA to the input.



Immunofluorescence analysis of U-2 OS cells using [KO Validated] MTA2 Rabbit monoclonal antibody (STJ11102119) at dilution of 1 : 100 (40x lens). Secondary antibody: Cy3 Goat Anti-Rabbit IgG (H+L) at 1:500 dilution. Blue: DAPI for nuclear staining.



Immunohistochemistry analysis of MTA2 in paraffin-embedded human colon using MTA2 Rabbit monoclonal antibody (STJ11102119) at dilution of 1:100 (40x lens). Perform microwave antigen retrieval with 10 mM PBS buffer pH 7.2 before commencing with immunohistochemistry staining protocol.



Western blot analysis of lysates from wild type (WT) and MTA2 knockout (KO) 293T cells, using [KO Validated] MTA2 Rabbit monoclonal antibody (STJ11102119) at 1:1000 dilution. Secondary antibody: HRP Goat Anti-Rabbit IgG (H+L) (STJS000856) at 1:10000 dilution. Lysates/proteins: 25 Mu g per lane. Blocking buffer: 3% nonfat dry milk in TBST. Detection: ECL Basic Kit. Exposure time: 180s.

This product is suitable for in-vitro studies under the RESEARCH USE ONLY [RUO] licence. This product must not be used as for diagnostic or other medical purposes.
St John's Laboratory Ltd, Knowledge Dock Business Centre, University Way, London, E16 2RD | Tel: 0208 223 3081