

Anti-IGFBP7 antibody (50-150) [S7MR] (STJ11102117)

STJ11102117

GENERAL INFORMATION

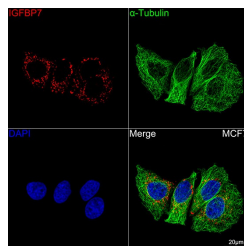
Product Type	Primary antibodies
Short Description	
Applications	WB/IF/CC/ELISA
Host/Source	Rabbit
Reactivity	Human/Mouse/Rat

PRODUCT PROPERTIES

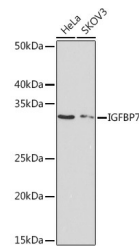
Clonality	Monoclonal
Clone ID	S7MR
Concentration	Lot specific
Conjugation	Unconjugated
Purification	Affinity purification
Dilution Range	WB:1:1000-1:2000 IF/CC:1:100-1:400 ELISA:Recommended starting concentration is 1 µg/mL. Please optimize the concentration based on your specific assay requirements.
Formulation	PBS with 0.02% Sodium Azide, 0.05% BSA, 50% Glycerol, pH 7.3.
Isotype	IgG
Storage Instruction	Store at -20°C for up to 1 year from the date of receipt, and avoid repeat freeze-thaw cycles.

TARGET INFORMATION

Gene ID	3490
Gene Symbol	IGFBP7
Uniprot ID	IBP7_HUMAN
Immunogen	
Immunogen Region	50-150
Specificity	A synthetic peptide corresponding to a sequence within amino acids 50-150 of human IGFBP7 (Q16270).
Immunogen Sequence	LGETRDAAGCCPMCARGECE PCGGGGAGRGYCAPGMECVK SRKRRKKGAGAAAGGPGVSG VCVCKSRYPVCGSDGTTTYP GCQLRAASQRAESRGEKAIT Q



Confocal imaging of MCF7 cells using IGFBP7 Rabbit monoclonal antibody (STJ11102117, at dilution of 1:100) (Red). The cells were counterstained with Alpha-Tubulin Mouse monoclonal antibody (dilution 1:400) (Green). DAPI was used for nuclear staining (blue). Objective: 100x.



Western blot analysis of extracts of various cell lines, using IGFBP7 Rabbit monoclonal antibody (STJ11102117) at 1:1000 dilution. Secondary antibody: HRP Goat Anti-Rabbit IgG (H+L) (STJS000856) at 1:10000 dilution. Lysates/proteins: 25 µg per lane. Blocking buffer: 3% nonfat dry milk in TBST. Detection: ECL Basic Kit. Exposure time: 90s.

This product is suitable for in-vitro studies under the RESEARCH USE ONLY [RUO] licence. This product must not be used as for diagnostic or other medical purposes.
St John's Laboratory Ltd, Knowledge Dock Business Centre, University Way, London, E16 2RD | Tel: 0208 223 3081