

Anti-PRPF8 antibody (2200-2335) [S7MR] (STJ11102107)
STJ11102107

GENERAL INFORMATION

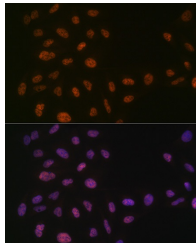
Product Type	Primary antibodies
Short Description	
Applications	WB/IHC-P/IF/ICC/ELISA
Host/Source	Rabbit
Reactivity	Human/Mouse/Rat

PRODUCT PROPERTIES

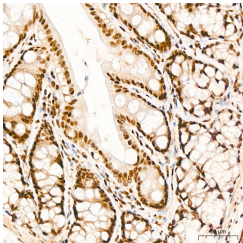
Clonality	Monoclonal
Clone ID	S7MR
Concentration	Lot specific
Conjugation	Unconjugated
Purification	Affinity purification
Dilution	WB:1:500-1:2000
Range	IHC-P:1:50-1:200 IF/ICC:1:50-1:200 ELISA:Recommended starting concentration is 1 μ g/mL. Please optimize the concentration based on your specific assay requirements.
Formulation	PBS with 0.02% Sodium Azide, 0.05% BSA, 50% Glycerol, pH 7.3.
Isotype	IgG
Storage	Store at -20°C for up to 1 year from the date of receipt, and avoid repeat freeze-thaw cycles.
Instruction	

TARGET INFORMATION

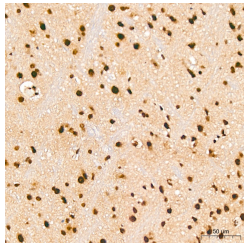
Gene ID	10594
Gene Symbol	PRPF8
Uniprot ID	PRP8_HUMAN
Immunogen	
Immunogen Region	2200-2335
Specificity	Recombinant fusion protein containing a sequence corresponding to amino acids 2200-2335 of human PRPF8 (Q6P2Q9).
Immunogen Sequence	MADNPSWDGEKTIITCSFT PGSCSLTAYKLTPSGYEWGR QNTDKGNPNKGYLPSHYERV QMLLSDRFLGFFMVPAQSSW NYNFMGVRHDPNMKYELQLA NPKEFYHEVHRPSHFLNFAL LQGEVYSADREDLYA



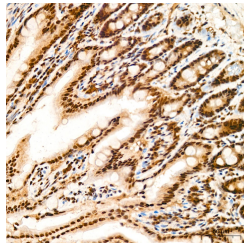
Immunofluorescence analysis of U-2 OS cells using PRPF8 Rabbit monoclonal antibody (STJ11102107) at dilution of 1:100 (40x lens). Secondary antibody: Cy3 Goat Anti-Rabbit IgG (H+L) at 1:500 dilution. Blue: DAPI for nuclear staining.



Immunohistochemistry analysis of PRPF8 in paraffin-embedded rat colon tissue using PRPF8 Rabbit monoclonal antibody (STJ11102107) at a dilution of 1:200 (40x lens). High pressure antigen retrieval was performed with 0.01 M citrate buffer (pH 6.0) prior to immunohistochemistry staining.



Immunohistochemistry analysis of PRPF8 in paraffin-embedded mouse brain tissue using PRPF8 Rabbit monoclonal antibody (STJ11102107) at a dilution of 1:200 (40x lens). High pressure antigen retrieval was performed with 0.01 M citrate buffer (pH 6.0) prior to immunohistochemistry staining.



Immunohistochemistry analysis of PRPF8 in paraffin-embedded mouse colon tissue using PRPF8 Rabbit monoclonal antibody (STJ11102107) at a dilution of 1:200 (40x lens). High pressure antigen retrieval was performed with 0.01 M citrate buffer (pH 6.0) prior to immunohistochemistry staining.

This product is suitable for in-vitro studies under the RESEARCH USE ONLY [RUO] licence. This product must not be used as for diagnostic or other medical purposes.
St John's Laboratory Ltd, Knowledge Dock Business Centre, University Way, London, E16 2RD | Tel: 0208 223 3081