

Anti-U2AF2 antibody (376-475) [S0MR] (STJ11102100)
STJ11102100

GENERAL INFORMATION

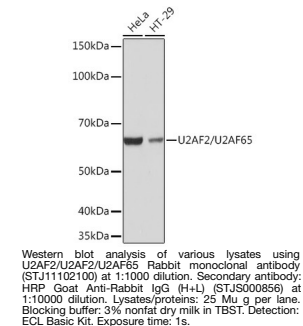
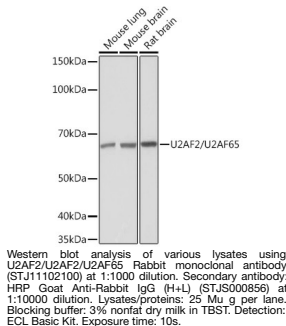
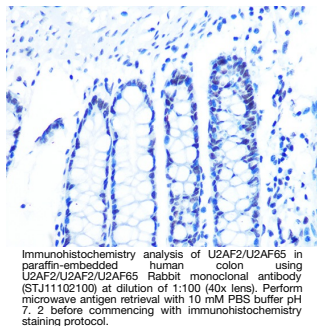
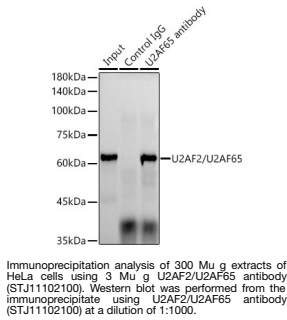
Product Type	Primary antibodies
Short Description	
Applications	WB/IHC-P/IP/ELISA
Host/Source	Rabbit
Reactivity	Human/Mouse/Rat

PRODUCT PROPERTIES

Clonality	Monoclonal
Clone ID	S0MR
Concentration	Lot specific
Conjugation	Unconjugated
Purification	Affinity purification
Dilution Range	WB:1:1000-1:6000 IHC-P:1:500-1:2000 IP:0.5 Mu g-4 Mu g antibody for 200 Mu g-400 Mu g extracts of whole cells ELISA:Recommended starting concentration is 1 Mu g/mL. Please optimize the concentration based on your specific assay requiremen
Formulation	PBS with 0.02% Sodium Azide, 0.05% BSA, 50% Glycerol, pH 7.3.
Isotype	IgG
Storage Instruction	Store at-20°C for up to 1 year from the date of receipt, and avoid repeat freeze-thaw cycles.

TARGET INFORMATION

Gene ID	11338
Gene Symbol	U2AF2
Uniprot ID	U2AF2_HUMAN
Immunogen	
Immunogen Region	376-475
Specificity	A synthetic peptide corresponding to a sequence within amino acids 376-475 of human U2AF2/U2AF2/U2AF65 (P26368). EVLCLNMVLP EELLDD E EY EEIVEDVRDECSKYGLV KSI EIPRPVDGVEVP GCGKIFVE FTSVFDCQKAMQGLTGRKFA
Immunogen Sequence	NRVWVTKYCDPDSYHRRDFW



This product is suitable for in-vitro studies under the RESEARCH USE ONLY [RUO] licence. This product must not be used as for diagnostic or other medical purposes.
St John's Laboratory Ltd, Knowledge Dock Business Centre, University Way, London, E16 2RD | Tel: 0208 223 3081