

**Anti-GRK2 antibody (590-689) [S3MR] (STJ11102083)**  
STJ11102083

**GENERAL INFORMATION**

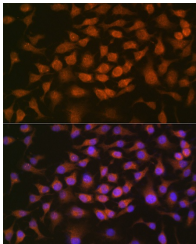
<b>Product Type</b>	Primary antibodies
<b>Short Description</b>	
<b>Applications</b>	WB/IF/ICC/ELISA
<b>Host/Source</b>	Rabbit
<b>Reactivity</b>	Human/Mouse/Rat

**PRODUCT PROPERTIES**

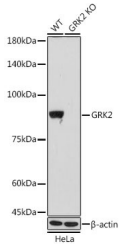
<b>Clonality</b>	Monoclonal
<b>Clone ID</b>	S3MR
<b>Concentration</b>	Lot specific
<b>Conjugation</b>	Unconjugated
<b>Purification</b>	Affinity purification
<b>Dilution Range</b>	WB:1:500-1:1000 IF/ICC:1:50-1:200 ELISA:Recommended starting concentration is 1 Mu g/mL. Please optimize the concentration based on your specific assay requirements.
<b>Formulation</b>	PBS with 0.02% Sodium Azide, 0.05% BSA, 50% Glycerol, pH 7.3.
<b>Isotype</b>	IgG
<b>Storage Instruction</b>	Store at -20°C for up to 1 year from the date of receipt, and avoid repeat freeze-thaw cycles.

**TARGET INFORMATION**

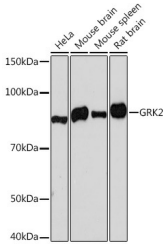
<b>Gene ID</b>	156
<b>Gene Symbol</b>	GRK2
<b>Uniprot ID</b>	ARBK1_HUMAN
<b>Immunogen</b>	
<b>Immunogen Region</b>	590-689
<b>Specificity</b>	A synthetic peptide corresponding to a sequence within amino acids 590-689 of human GRK2 (P25098).
<b>Immunogen Sequence</b>	WRGEGEAPQSLTMEIIQSV EETQIKERKCLLLKIRGGKQ FILQCDSDELVQWKKELRD AYREAQQLVQRPVKMKNKPR SPVVELSKVPLVQRGSANGL



Immunofluorescence analysis of HeLa cells using GRK2 Rabbit monoclonal antibody (STJ11102083) at dilution of 1:100 (40x lens). Blue: DAPI for nuclear staining.



Western blot analysis of extracts from wild type (WT) and GRK2 knockout (KO) HeLa cells, using GRK2 antibody (STJ11102083) at 1:1000 dilution. Secondary antibody: HRP Goat Anti-Rabbit IgG (H+L) (STJS000856) at 1:10000 dilution. Lysates/proteins: 25 Mu g per lane. Blocking buffer: 3% nonfat dry milk in TBST. Detection: ECL Basic Kit. Exposure time: 30s.



Western blot analysis of extracts of various cell lines, using GRK2 Rabbit monoclonal antibody (STJ11102083) at 1:1000 dilution. Secondary antibody: HRP Goat Anti-Rabbit IgG (H+L) (STJS000856) at 1:10000 dilution. Lysates/proteins: 25 Mu g per lane. Blocking buffer: 3% nonfat dry milk in TBST. Detection: ECL Basic Kit. Exposure time: 3min.

This product is suitable for in-vitro studies under the RESEARCH USE ONLY [RUO] licence. This product must not be used as for diagnostic or other medical purposes.  
St John's Laboratory Ltd, Knowledge Dock Business Centre, University Way, London, E16 2RD | Tel: 0208 223 3081