

Anti-ITPR1 antibody (2200-2300) [S1MR] (STJ11102081)

STJ11102081

GENERAL INFORMATION

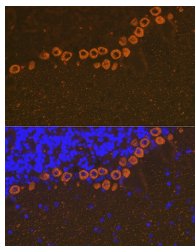
Product Type	Primary antibodies
Short Description	
Applications	WB/IHC-P/IF/ICC/ELISA
Host/Source	Rabbit
Reactivity	Mouse/Rat

PRODUCT PROPERTIES

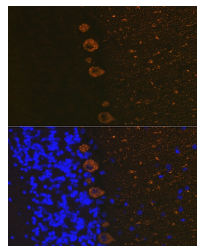
Clonality	Monoclonal
Clone ID	S1MR
Concentration	Lot specific
Conjugation	Unconjugated
Purification	Affinity purification
Dilution Range	WB:1:1000-1:2000 IHC-P:1:200-1:2000 IF/ICC:1:100-1:1000 ELISA:Recommended starting concentration is 1 µg/mL. Please optimize the concentration based on your specific assay requirements.
Formulation	PBS with 0.02% Sodium Azide, 0.05% BSA, 50% Glycerol, pH 7.3.
Isotype	IgG
Storage Instruction	Store at -20°C for up to 1 year from the date of receipt, and avoid repeat freeze-thaw cycles.

TARGET INFORMATION

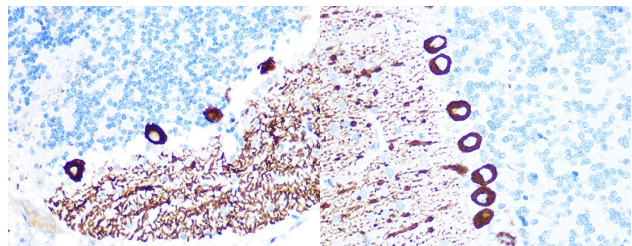
Gene ID	3708
Gene Symbol	ITPR1
Uniprot ID	ITPR1_HUMAN
Immunogen	
Immunogen Region	2200-2300
Specificity	A synthetic peptide corresponding to a sequence within amino acids 2200-2300 of human ITPR1 (Q14643).
Immunogen Sequence	HTAQIEIVRLDRTMEQIVFP VPSICEFLTKESKLRIYYTT ERDEQGSKINDFFLRSEDLF NEMNWQKKLRAQPVLYWCAR NMSFWSSISFNLAVLMNLLV A



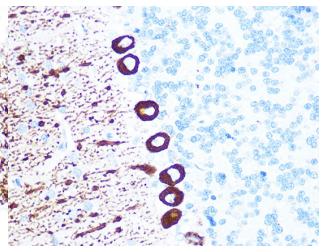
Immunofluorescence analysis of mouse brain using ITPR1 Rabbit monoclonal antibody (STJ11102081) at dilution of 1:100 (40x lens). Blue: DAPI for nuclear staining.



Immunofluorescence analysis of rat brain using ITPR1 Rabbit monoclonal antibody (STJ11102081) at dilution of 1:100 (40x lens). Blue: DAPI for nuclear staining.



Immunohistochemistry analysis of paraffin-embedded mouse brain using ITPR1 Rabbit monoclonal antibody (STJ11102081) at dilution of 1:100 (40x lens). Perform microwave antigen retrieval with 10 mM PBS buffer pH 7.2 before commencing with immunohistochemistry staining protocol.



Immunohistochemistry analysis of paraffin-embedded rat brain using ITPR1 Rabbit monoclonal antibody (STJ11102081) at dilution of 1:100 (40x lens). Perform microwave antigen retrieval with 10 mM PBS buffer pH 7.2 before commencing with immunohistochemistry staining protocol.

This product is suitable for in-vitro studies under the RESEARCH USE ONLY [RUO] licence. This product must not be used as for diagnostic or other medical purposes.
St John's Laboratory Ltd, Knowledge Dock Business Centre, University Way, London, E16 2RD | Tel: 0208 223 3081