

Anti-DPYSL2 antibody (473-572) [S4MR] (STJ11102074)
STJ11102074

GENERAL INFORMATION

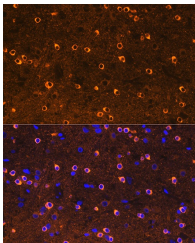
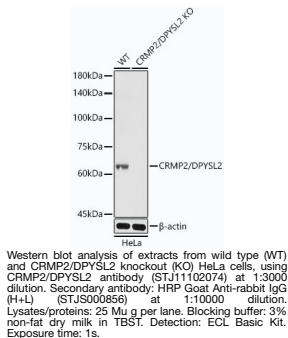
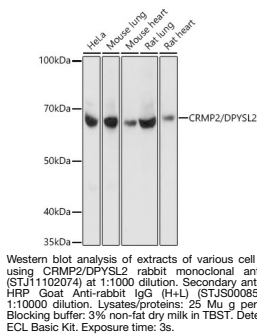
Product Type	Primary antibodies
Short Description	
Applications	WB/IF/ICC/ELISA
Host/Source	Rabbit
Reactivity	Human/Mouse/Rat

PRODUCT PROPERTIES

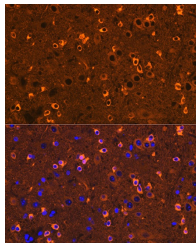
Clonality	Monoclonal
Clone ID	S4MR
Concentration	Lot specific
Conjugation	Unconjugated
Purification	Affinity purification
Dilution Range	WB:1:500-1:5000 IF/ICC:1:50-1:200 ELISA:Recommended starting concentration is 1 Mu g/mL. Please optimize the concentration based on your specific assay requirements.
Formulation	PBS with 0.02% Sodium Azide, 0.05% BSA, 50% Glycerol, pH 7.3.
Isotype	IgG
Storage Instruction	Store at -20°C for up to 1 year from the date of receipt, and avoid repeat freeze-thaw cycles.

TARGET INFORMATION

Gene ID	1808
Gene Symbol	DPYSL2
Uniprot ID	DPYL2_HUMAN
Immunogen	
Immunogen Region	473-572
Specificity	A synthetic peptide corresponding to a sequence within amino acids 473-572 of human CRMP2/DPYSL2 (Q16555).
Immunogen Sequence	PFPDFVYKRIKARSRLAELR GVPRGLYDGPVCEVSVTPKT VTPASSAKTSPAKQQAPPVR NLHQSGFSLSGAQIDNIPR RTTQRIVAPPGGRANITSLG



Immunofluorescence analysis of rat brain using CRMP2/DPYSL2 rabbit monoclonal antibody (STJ11102074) at dilution of 1:100 (40x lens). Blue: DAPI for nuclear staining.



Immunofluorescence analysis of mouse brain using CRMP2/DPYSL2 rabbit monoclonal antibody (STJ11102074) at dilution of 1:100 (40x lens). Blue: DAPI for nuclear staining.

This product is suitable for in-vitro studies under the RESEARCH USE ONLY [RUO] licence. This product must not be used as for diagnostic or other medical purposes.
St John's Laboratory Ltd, Knowledge Dock Business Centre, University Way, London, E16 2RD | Tel: 0208 223 3081