

Anti-DKC1 antibody (300-400) [S3MR] (STJ11102073)
STJ11102073

GENERAL INFORMATION

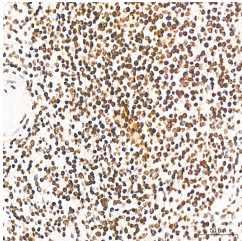
Product Type	Primary antibodies
Short Description	
Applications	WB/IHC-P/ELISA
Host/Source	Rabbit
Reactivity	Human/Mouse/Rat

PRODUCT PROPERTIES

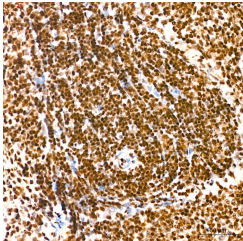
Clonality	Monoclonal
Clone ID	S3MR
Concentration	Lot specific
Conjugation	Unconjugated
Purification	Affinity purification
Dilution Range	WB:1:500-1:2000 IHC-P:1:50-1:200 ELISA:Recommended starting concentration is 1 Mu g/mL. Please optimize the concentration based on your specific assay requirements.
Formulation	PBS with 0.02% Sodium Azide, 0.05% BSA, 50% Glycerol, pH 7.3.
Isotype	IgG
Storage Instruction	Store at -20°C for up to 1 year from the date of receipt, and avoid repeat freeze-thaw cycles.

TARGET INFORMATION

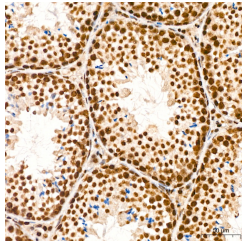
Gene ID	1736
Gene Symbol	DKC1
Uniprot ID	DKC1_HUMAN
Immunogen	
Immunogen Region	300-400
Specificity	A synthetic peptide corresponding to a sequence within amino acids 300-400 of human DKC1 (O60832).
Immunogen Sequence	VMKDSAVNAICYGAKIMLPGLVRYEDGIEVNQEIWITTKGEAICMAIALMTTAVISTCDHGIVAKIKRVIMERDTPRK WGLGPKASQKKLMIQGLLDK



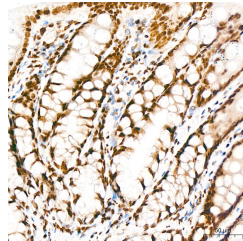
Immunohistochemistry analysis ofA DKC1 in paraffin-embeddedA human spleen tissue usingA DKC1 Rabbit monoclonal antibody (STJ11102073) at a dilution of 1:200 (40x lens). High pressure antigen retrieval was performed with 0. 01 M citrate buffer (pH 6. 0) prior to immunohistochemistry staining.



Immunohistochemistry analysis ofA DKC1 in paraffin-embeddedA rat spleen tissue usingA DKC1 Rabbit monoclonal antibody (STJ11102073) at a dilution of 1:200 (40x lens). High pressure antigen retrieval was performed with 0. 01 M citrate buffer (pH 6. 0) prior to immunohistochemistry staining.



Immunohistochemistry analysis ofA DKC1 in paraffin-embeddedA mouse testis tissue usingA DKC1 Rabbit monoclonal antibody (STJ11102073) at a dilution of 1:200 (40x lens). High pressure antigen retrieval was performed with 0. 01 M citrate buffer (pH 6. 0) prior to immunohistochemistry staining.



Immunohistochemistry analysis ofA DKC1 in paraffin-embeddedA rat colon tissue usingA DKC1 Rabbit monoclonal antibody (STJ11102073) at a dilution of 1:200 (40x lens). High pressure antigen retrieval was performed with 0. 01 M citrate buffer (pH 6. 0) prior to immunohistochemistry staining.