

Anti-TOP2A antibody (1432-1531) [S7MR] (STJ11102067)

STJ11102067

GENERAL INFORMATION

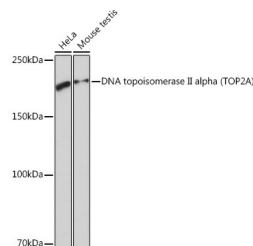
Product Type	Primary antibodies
Short Description	
Applications	WB/ELISA
Host/Source	Rabbit
Reactivity	Human/Mouse

PRODUCT PROPERTIES

Clonality	Monoclonal
Clone ID	S7MR
Concentration	Lot specific
Conjugation	Unconjugated
Purification	Affinity purification
Dilution Range	WB:1:1000-1:6000 ELISA:Recommended starting concentration is 1 Mu g/mL. Please optimize the concentration based on your specific assay requirements.
Formulation	PBS with 0.02% Sodium Azide, 0.05% BSA, 50% Glycerol, pH 7.3.
Isotype	IgG
Storage	Store at -20°C for up to 1 year from the date of receipt, and avoid repeat freeze-thaw cycles.
Instruction	

TARGET INFORMATION

Gene ID	7153
Gene Symbol	TOP2A
Uniprot ID	TOP2A_HUMAN
Immunogen	
Immunogen Region	1432-1531
Specificity	A synthetic peptide corresponding to a sequence within amino acids 1432-1531 of human DNA topoisomerase II alpha (TOP2A) (P11388).
Immunogen Sequence	AKKRAAPKGTKRDPALNSGV SQKPDPAKTKNRRKRKPSTS DDSDSNFEKIVSKAVTSKKS KGESDDFHMDFDSAVAPRAK SVRAKKPIKYLEEDEDLDF



Western blot analysis of extracts of various cell lines, using DNA topoisomerase II alpha (TOP2A) Rabbit monoclonal antibody (STJ11102067) at 1:1000 dilution. Secondary antibody: HRP Goat Anti-Rabbit IgG (H+L) (STJ5000856) at 1:10000 dilution. Lysates/proteins: 25 Mu g per lane. Blocking buffer: 3% nonfat dry milk in TBST. Detection: ECL Basic Kit. Exposure time: 3s.

This product is suitable for in-vitro studies under the RESEARCH USE ONLY [RUO] licence. This product must not be used as for diagnostic or other medical purposes.
St John's Laboratory Ltd, Knowledge Dock Business Centre, University Way, London, E16 2RD | Tel: 0208 223 3081