

**Anti-GATA4 antibody (343-442) [S9MR] (STJ11102039)**  
STJ11102039

**GENERAL INFORMATION**

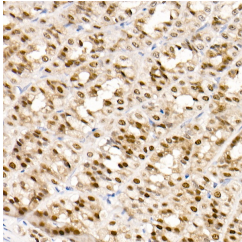
<b>Product Type</b>	Primary antibodies
<b>Short Description</b>	
<b>Applications</b>	WB/IHC-P/ELISA
<b>Host/Source</b>	Rabbit
<b>Reactivity</b>	Mouse/Rat

**PRODUCT PROPERTIES**

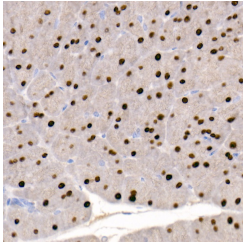
<b>Clonality</b>	Monoclonal
<b>Clone ID</b>	S9MR
<b>Concentration</b>	Lot specific
<b>Conjugation</b>	Unconjugated
<b>Purification</b>	Affinity purification
<b>Dilution Range</b>	WB:1:1000-1:2000 IHC-P:1:200-1:2000 ELISA:Recommended starting concentration is 1 $\mu$ g/mL. Please optimize the concentration based on your specific assay requirements.
<b>Formulation</b>	PBS with 0.05% Proclin300, 0.05% BSA, 50% Glycerol, pH 7.3.
<b>Isotype</b>	IgG
<b>Storage Instruction</b>	Store at -20°C for up to 1 year from the date of receipt, and avoid repeat freeze-thaw cycles.

**TARGET INFORMATION**

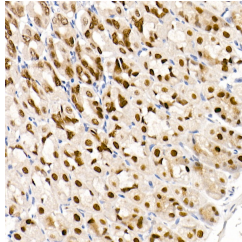
<b>Gene ID</b>	2626
<b>Gene Symbol</b>	GATA4
<b>Uniprot ID</b>	GATA4_HUMAN
<b>Immunogen</b>	
<b>Immunogen Region</b>	343-442
<b>Specificity</b>	A synthetic peptide corresponding to a sequence within amino acids 343-442 of human GATA4 (NP_002043.2).
<b>Immunogen Sequence</b>	ASGASSNSSNATTSSSEEMR PIKTEPGLSSHYGHSSVSQ TFSVSAMSGHGSIHPVLSA LKLSPPQGYASPVSQSPQTSS KQDSWNSLVLDASHGDIITA



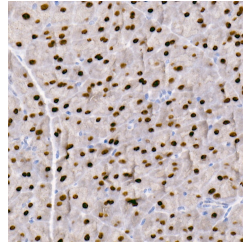
Immunohistochemistry analysis of paraffin-embedded rat stomach using GATA4 Rabbit monoclonal antibody (STJ11102039) at dilution of 1:500 (40x lens). Perform high pressure antigen retrieval with 10 mM citrate buffer pH 6, 0 before commencing with immunohistochemistry staining protocol.



Immunohistochemistry analysis of paraffin-embedded rat pancreas using GATA4 Rabbit monoclonal antibody (STJ11102039) at dilution of 1:500 (40x lens). Perform high pressure antigen retrieval with 10 mM citrate buffer pH 6, 0 before commencing with immunohistochemistry staining protocol.



Immunohistochemistry analysis of paraffin-embedded mouse stomach using GATA4 Rabbit monoclonal antibody (STJ11102039) at dilution of 1:500 (40x lens). Perform high pressure antigen retrieval with 10 mM citrate buffer pH 6, 0 before commencing with immunohistochemistry staining protocol.



Immunohistochemistry analysis of paraffin-embedded mouse pancreas using GATA4 Rabbit monoclonal antibody (STJ11102039) at dilution of 1:500 (40x lens). Perform high pressure antigen retrieval with 10 mM citrate buffer pH 6, 0 before commencing with immunohistochemistry staining protocol.

This product is suitable for in-vitro studies under the RESEARCH USE ONLY [RUO] licence. This product must not be used as for diagnostic or other medical purposes.  
St John's Laboratory Ltd, Knowledge Dock Business Centre, University Way, London, E16 2RD | Tel: 0208 223 3081