

Anti-ALYREF antibody (158-257) [S6MR] (STJ11102036)
STJ11102036

GENERAL INFORMATION

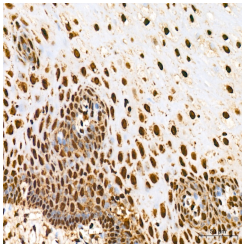
Product Type	Primary antibodies
Short Description	
Applications	WB/IHC-P/ELISA
Host/Source	Rabbit
Reactivity	Human/Mouse/Rat

PRODUCT PROPERTIES

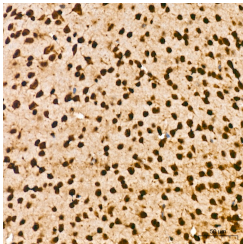
Clonality	Monoclonal
Clone ID	S6MR
Concentration	Lot specific
Conjugation	Unconjugated
Purification	Affinity purification
Dilution Range	WB:1:500-1:1000 IHC-P:1:500-1:1000 ELISA:Recommended starting concentration is 1 Mu g/mL. Please optimize the concentration based on your specific assay requirements.
Formulation	PBS with 0.02% Sodium Azide, 0.05% BSA, 50% Glycerol, pH 7.3.
Isotype	IgG
Storage	Store at -20°C for up to 1 year from the date of receipt, and avoid repeat freeze-thaw cycles.
Instruction	

TARGET INFORMATION

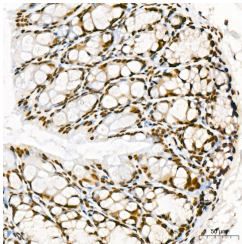
Gene ID	10189
Gene Symbol	ALYREF
Uniprot ID	THOC4_HUMAN
Immunogen	
Immunogen Region	158-257
Specificity	A synthetic peptide corresponding to a sequence within amino acids 158-257 of human THOC4/ALYREFREF (Q86V81).
Immunogen Sequence	DALKAMKQYNGVPLDGRPMN IQLVTSQIDAQRRPAQSVNR GGMTRNRGAGGFGGGGGTRR GTRGGARGRGRGAGRNSKQQ LSAEELDAQLDAYNARMDTS



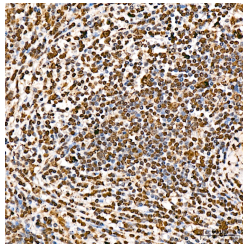
Immunohistochemistry analysis of Δ THOC4/ALYREF in paraffin-embedded human esophagus tissue using Δ THOC4/ALYREF Rabbit monoclonal antibody (STJ11102036) at a dilution of 1:800 (40x lens). High pressure antigen retrieval was performed with 0.01 M citrate buffer (pH 6.0) prior to immunohistochemistry staining.



Immunohistochemistry analysis of Δ THOC4/ALYREF in paraffin-embedded mouse brain tissue using Δ THOC4/ALYREF Rabbit monoclonal antibody (STJ11102036) at a dilution of 1:800 (40x lens). High pressure antigen retrieval was performed with 0.01 M citrate buffer (pH 6.0) prior to immunohistochemistry staining.



Immunohistochemistry analysis of Δ THOC4/ALYREF in paraffin-embedded mouse colon tissue using Δ THOC4/ALYREF Rabbit monoclonal antibody (STJ11102036) at a dilution of 1:800 (40x lens). High pressure antigen retrieval was performed with 0.01 M citrate buffer (pH 6.0) prior to immunohistochemistry staining.



Immunohistochemistry analysis of Δ THOC4/ALYREF in paraffin-embedded human spleen tissue using Δ THOC4/ALYREF Rabbit monoclonal antibody (STJ11102036) at a dilution of 1:800 (40x lens). High pressure antigen retrieval was performed with 0.01 M citrate buffer (pH 6.0) prior to immunohistochemistry staining.

This product is suitable for in-vitro studies under the RESEARCH USE ONLY [RUO] licence. This product must not be used as for diagnostic or other medical purposes.
St John's Laboratory Ltd, Knowledge Dock Business Centre, University Way, London, E16 2RD | Tel: 0208 223 3081