

Anti-DDR2 antibody (756-855) [S5MR] (STJ11102035)

STJ11102035

GENERAL INFORMATION

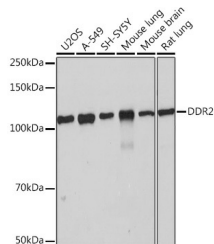
Product Type	Primary antibodies
Short Description	
Applications	WB/ELISA
Host/Source	Rabbit
Reactivity	Human/Mouse/Rat

PRODUCT PROPERTIES

Clonality	Monoclonal
Clone ID	S5MR
Concentration	Lot specific
Conjugation	Unconjugated
Purification	Affinity purification
Dilution Range	WB:1:1000-1:6000 ELISA:Recommended starting concentration is 1 Mu g/mL. Please optimize the concentration based on your specific assay requirements.
Formulation	PBS with 0.02% Sodium Azide, 0.05% BSA, 50% Glycerol, pH 7.3.
Isotype	IgG
Storage	Store at -20°C for up to 1 year from the date of receipt, and avoid repeat freeze-thaw cycles.
Instruction	

TARGET INFORMATION

Gene ID	4921
Gene Symbol	DDR2
Uniprot ID	DDR2_HUMAN
Immunogen	
Immunogen	756-855
Region	
Specificity	A synthetic peptide corresponding to a sequence within amino acids 756-855 of human DDR2 (Q16832).
Immunogen	WESILLGKFTTASDVWAFGV TLWETFTFCQEQPYSQLSDE QVIENTGEFFRDQGRQTYLP QPAICPDSVYKMLSCWRRD
Sequence	TKNRPSFQEIHLILLQQGDE



Western blot analysis of extracts of various cell lines, using DDR2 Rabbit monoclonal antibody (STJ11102035) at 1:1000 dilution. Secondary antibody: HRP Goat Anti-Rabbit IgG (H+L) (STJSD00856) at 1:10000 dilution. Lysates/proteins: 25 Mu g per lane. Blocking buffer: 3% nonfat dry milk in TBST. Detection: ECL Basic Kit. Exposure time: 10s.

This product is suitable for in-vitro studies under the RESEARCH USE ONLY [RUO] licence. This product must not be used as for diagnostic or other medical purposes.
St John's Laboratory Ltd, Knowledge Dock Business Centre, University Way, London, E16 2RD | Tel: 0208 223 3081