

Anti-SMARCC1 antibody (700-800) [S0MR] (STJ11102030)

STJ11102030

GENERAL INFORMATION

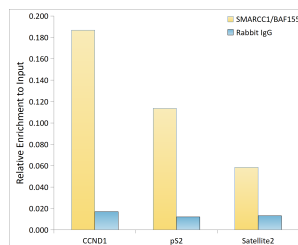
Product Type	Primary antibodies
Short Description	
Applications	WB/IF/ICC/ELISA/ChIP
Host/Source	Rabbit
Reactivity	Human/Mouse

PRODUCT PROPERTIES

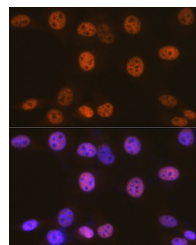
Clonality	Monoclonal
Clone ID	S0MR
Concentration	Lot specific
Conjugation	Unconjugated
Purification	Affinity purification
Dilution Range	WB:1:500-1:2000 IF/ICC:1:50-1:200 ELISA:Recommended starting concentration is 1 Mu g/mL. Please optimize the concentration based on your specific assay requirements. ChIP:5 Mu g antibody for 10 Mu g-15 Mu g of Chromatin
Formulation	PBS with 0.02% Sodium Azide, 0.05% BSA, 50% Glycerol, pH 7.3.
Isotype	IgG
Storage Instruction	Store at -20°C for up to 1 year from the date of receipt, and avoid repeat freeze-thaw cycles.

TARGET INFORMATION

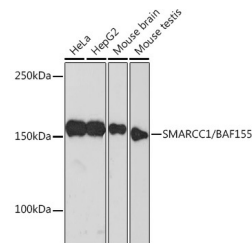
Gene ID	6599
Gene Symbol	SMARCC1
Uniprot ID	SMRC1_HUMAN
Immunogen	
Immunogen Region	700-800
Specificity	Recombinant fusion protein containing a sequence corresponding to amino acids 700-800 of human SMARCC1/BAF155 (Q92922).
Immunogen Sequence	AFLASVVDPRVASAAKAAL EEFSRVREEVPLELVEAHVK KVQEAARASGKVDPTYGLES SCIAGTGPDEPEKLEGAEIEE KMEADPDGQQPEKAENKVEN E



Chromatin immunoprecipitation analysis of extracts of MCF7 beta-estradiol cells, using SMARCC1/BAF155 antibody (STJ11102030) and rabbit IgG. The amount of immunoprecipitated DNA was checked by quantitative PCR. Histogram was constructed by the ratios of the immunoprecipitated DNA to the input.



Immunofluorescence analysis of NIH-3T3 cells using SMARCC1/BAF155 Rabbit monoclonal antibody (STJ11102030) at dilution of 1:100 (40x lens). Secondary antibody: Cy3 Goat Anti-Rabbit IgG (H+L) at 1:500 dilution. Blue: DAPI for nuclear staining.



Western blot analysis of various lysates using SMARCC1/BAF155 Rabbit monoclonal antibody (STJ11102030) at 1:500 dilution. Secondary antibody: HRP Goat Anti-Rabbit IgG (H+L) (STJS000856) at 1:10000 dilution. Lysates/proteins: 25 Mu g per lane. Blocking buffer: 3% nonfat dry milk in TBST. Detection: ECL Basic Kit. Exposure time: 3min.

This product is suitable for in-vitro studies under the RESEARCH USE ONLY [RUO] licence. This product must not be used as for diagnostic or other medical purposes.

St John's Laboratory Ltd, Knowledge Dock Business Centre, University Way, London, E16 2RD | Tel: 0208 223 3081