

Anti-DPP4 antibody (667-766) [S5MR] (STJ11102025)

STJ11102025

GENERAL INFORMATION

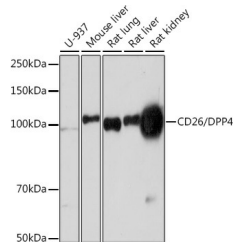
Product Type	Primary antibodies
Short Description	S5MR
Applications	WB/ELISA
Host/Source	Rabbit
Reactivity	Human/Mouse/Rat

PRODUCT PROPERTIES

Clonality	Monoclonal
Clone ID	S5MR
Concentration	Lot specific
Conjugation	Unconjugated
Purification	Affinity purification
Dilution Range	WB:1:500-1:1000 ELISA:Recommended starting concentration is 1 Mu g/mL. Please optimize the concentration based on your specific assay requirements.
Formulation	PBS with 0.02% Sodium Azide, 0.05% BSA, 50% Glycerol, pH 7.3.
Isotype	IgG
Storage	Store at -20°C for up to 1 year from the date of receipt, and avoid repeat freeze-thaw cycles.
Instruction	

TARGET INFORMATION

Gene ID	1803
Gene Symbol	DPP4
Uniprot ID	DPP4_HUMAN
Immunogen	
Immunogen	667-766
Region	
Specificity	A synthetic peptide corresponding to a sequence within amino acids 667-766 of human CD26/DPP4 (P27487).
Immunogen	TERYMGLPTPEDNLDHYRNS TVMSRAENFKQVEYLLIHGT ADDNVHFFQSSAQISKALVDV GVDFQAMWYTDEDHGIASST
Sequence	AHQHIYTHMSHFQKQCFSLP



Western blot analysis of extracts of various cell lines, using CD26/DPP4 Rabbit monoclonal antibody (STJ11102025) at 1:1000 dilution. Secondary antibody: HRP Goat Anti-Rabbit IgG (H+L) (STJS000856) at 1:10000 dilution. Lysates/proteins: 25 Mu g per lane. Blocking buffer: 3% nonfat dry milk in TBST. Detection: ECL Enhanced Kit. Exposure time: 3min.

This product is suitable for in-vitro studies under the RESEARCH USE ONLY [RUO] licence. This product must not be used as for diagnostic or other medical purposes.
St John's Laboratory Ltd, Knowledge Dock Business Centre, University Way, London, E16 2RD | Tel: 0208 223 3081