

## Anti-PLAT antibody (463-562) [S7MR] (STJ11102017)

STJ11102017

### GENERAL INFORMATION

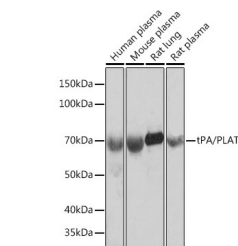
|                          |                    |
|--------------------------|--------------------|
| <b>Product Type</b>      | Primary antibodies |
| <b>Short Description</b> |                    |
| <b>Applications</b>      | WB/IF/ICC/ELISA    |
| <b>Host/Source</b>       | Rabbit             |
| <b>Reactivity</b>        | Human/Mouse/Rat    |

### PRODUCT PROPERTIES

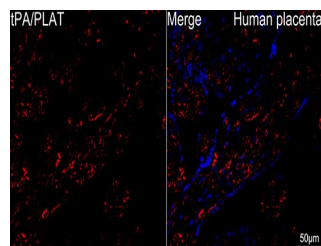
|                            |   |
|----------------------------|---|
| <b>Clonality</b>           | Monoclonal  |
| <b>Clone ID</b>            | S7MR  |
| <b>Concentration</b>       | Lot specific  |
| <b>Conjugation</b>         | Unconjugated  |
| <b>Purification</b>        | Affinity purification   |
| <b>Dilution Range</b>      | WB:1:1000-1:6000<br>IF/ICC:1:100-1:400<br>ELISA:Recommended starting concentration is 1 Mu g/mL. Please optimize the concentration based on your specific assay requirements. |
| <b>Formulation</b>         | PBS with 0.02% Sodium Azide, 0.05% BSA, 50% Glycerol, pH 7.3.   |
| <b>Isotype</b>             | IgG   |
| <b>Storage Instruction</b> | Store at -20°C for up to 1 year from the date of receipt, and avoid repeat freeze-thaw cycles.  |

### TARGET INFORMATION

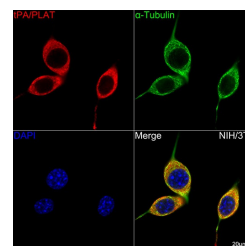
|                           |   |
|---------------------------|---|
| <b>Gene ID</b>            | 5327  |
| <b>Gene Symbol</b>        | PLAT  |
| <b>Uniprot ID</b>         | TPA_HUMAN   |
| <b>Immunogen</b>          |   |
| <b>Immunogen Region</b>   | 463-562   |
| <b>Specificity</b>        | A synthetic peptide corresponding to a sequence within amino acids 463-562 of human tPA/tPA/PLAT (P00750).  |
| <b>Immunogen Sequence</b> | LKEAHVRLYPSSRCTSQHLL NRTVDNMLCAGDTRSGGPQ ANLHDACQGDSSGGPLVCLND GRMTLVGIISWGLGCGQKDV<br>PGVYTKVTNYLDWIRDNMRP |



Western blot analysis of extracts of various cell lines, using tPA/PLAT rabbit monoclonal antibody (STJ11102017) at 1:1000 dilution. Secondary antibody: HRP Goat Anti-rabbit IgG (H+L) (STJS000856) at 1:10000 dilution. Lysates/proteins: 25 Mu g per lane. Blocking buffer: 3% non-fat dry milk in TBST. Detection: ECL Basic Kit. Exposure time: 10s.



Confocal imaging of human placenta using tPA/PLAT rabbit monoclonal antibody (STJ11102017, at dilution of 1:100) (Red). DAPI was used for nuclear staining (blue). Objective: 40x. Perform high pressure antigen retrieval with 10 mM citrate buffer pH 6.0 before commencing with IF staining protocol.



Confocal imaging of NIH/3T3 cells using tPA/PLAT rabbit monoclonal antibody (STJ11102017, at dilution of 1:100) (Red). The cells were counterstained with Alpha-Tubulin mouse monoclonal antibody (dilution 1:400) (Green). DAPI was used for nuclear staining (blue). Objective: 100x.

This product is suitable for in-vitro studies under the RESEARCH USE ONLY [RUO] licence. This product must not be used as for diagnostic or other medical purposes.  
St John's Laboratory Ltd, Knowledge Dock Business Centre, University Way, London, E16 2RD | Tel: 0208 223 3081