

Anti-AQP1 antibody (170-269) [S5MR] (STJ11102015)

STJ11102015

GENERAL INFORMATION

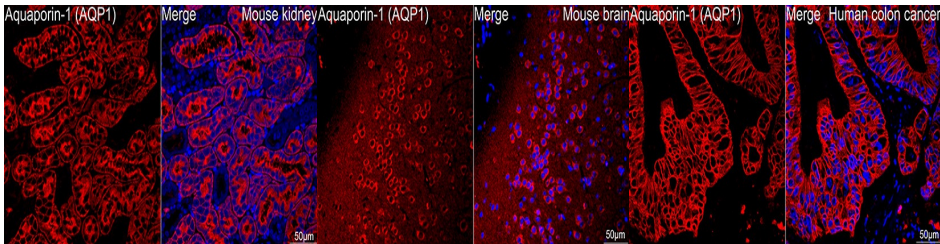
Product Type	Primary antibodies
Short Description	
Applications	WB/IHC-P/IF/ICC/ELISA
Host/Source	Rabbit
Reactivity	Human/Mouse/Rat

PRODUCT PROPERTIES

Clonality	Monoclonal
Clone ID	S5MR
Concentration	Lot specific
Conjugation	Unconjugated
Purification	Affinity purification
Dilution Range	WB:1:1000-1:6000 IHC-P:1:500-1:2000 IF/ICC:1:100-1:1000 ELISA:Recommended starting concentration is 1 µg/mL. Please optimize the concentration based on your specific assay requirements.
Formulation	PBS with 0.02% Sodium Azide, 0.05% BSA, 50% Glycerol, pH 7.3.
Isotype	IgG
Storage Instruction	Store at -20°C for up to 1 year from the date of receipt, and avoid repeat freeze-thaw cycles.

TARGET INFORMATION

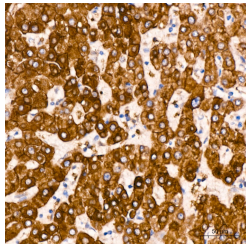
Gene ID	358
Gene Symbol	AQP1
Uniprot ID	AQP1_HUMAN
Immunogen	
Immunogen Region	170-269
Specificity	A synthetic peptide corresponding to a sequence within amino acids 170-269 of human Aquaporin-1 (Aquaporin-1 (AQP1)) (P29972).
Immunogen Sequence	LAIGLSVALGHLLAIDYTC GINPARSFGSAVITHNFSNH WIFWVGPIGGALAVLIYDF ILAPRSSDLTDRVKVWTSGQ VEEYDLADDDINSRVEMKPK



Confocal imaging of paraffin-embedded Mouse kidney tissue using Aquaporin-1 (AQP1) Rabbit monoclonal antibody (STJ11102015, dilution 1:100) followed by a further incubation with Cy3 Goat Anti-Rabbit IgG (H+L) (dilution 1:500) (Red). DAPI was used for nuclear staining (Blue). Microwave antigen retrieval performed with 0.01M Citrate Buffer (pH 6.0) prior to IF staining. Objective: 40x.

Confocal imaging of paraffin-embedded Mouse brain tissue using Aquaporin-1 (AQP1) Rabbit monoclonal antibody (STJ11102015, dilution 1:100) followed by a further incubation with Cy3 Goat Anti-Rabbit IgG (H+L) (dilution 1:500) (Red). DAPI was used for nuclear staining (Blue). Microwave antigen retrieval performed with 0.01M Citrate Buffer (pH 6.0) prior to IF staining. Objective: 40x.

Confocal imaging of paraffin-embedded Human colon cancer tissue using Aquaporin-1 (AQP1) Rabbit monoclonal antibody (STJ11102015, dilution 1:100) followed by a further incubation with Cy3 Goat Anti-Rabbit IgG (H+L) (dilution 1:500) (Red). DAPI was used for nuclear staining (Blue). High pressure antigen retrieval performed with 0.01M Citrate Buffer (pH 6.0) prior to IF staining. Objective: 40x.



Immunohistochemistry analysis of Aquaporin-1 (AQP1) in paraffin-embedded human liver using Aquaporin-1 (AQP1) Rabbit monoclonal antibody (STJ11102015) at dilution of 1:200 (40x lens). Perform high pressure antigen retrieval with 10 mM citrate buffer pH 6.0 before commencing with immunohistochemistry staining protocol.

This product is suitable for in-vitro studies under the RESEARCH USE ONLY [RUO] licence. This product must not be used as for diagnostic or other medical purposes.
St John's Laboratory Ltd, Knowledge Dock Business Centre, University Way, London, E16 2RD | Tel: 0208 223 3081