

Anti-EMD antibody (150-254) [S3MR] (STJ11102013)

STJ11102013

GENERAL INFORMATION

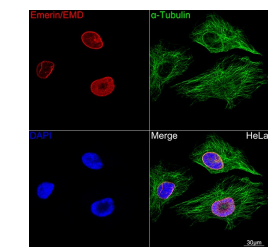
Product Type	Primary antibodies
Short Description	
Applications	WB/IHC-P/IF/ICC/ELISA
Host/Source	Rabbit
Reactivity	Human/Mouse/Rat

PRODUCT PROPERTIES

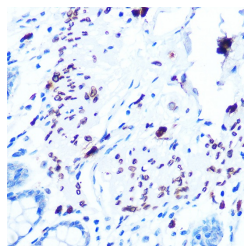
Clonality	Monoclonal
Clone ID	S3MR
Concentration	Lot specific
Conjugation	Unconjugated
Purification	Affinity purification
Dilution Range	WB:1:500-1:1000 IHC-P:1:50-1:200 IF/ICC:1:50-1:200 ELISA:Recommended starting concentration is 1 µg/mL. Please optimize the concentration based on your specific assay requirements.
Formulation	PBS with 0.02% Sodium Azide, 0.05% BSA, 50% Glycerol, pH 7.3.
Isotype	IgG
Storage	Store at -20°C for up to 1 year from the date of receipt, and avoid repeat freeze-thaw cycles.
Instruction	

TARGET INFORMATION

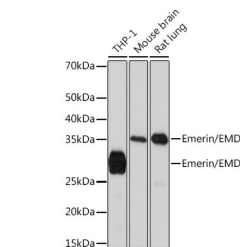
Gene ID	2010
Gene Symbol	EMD
Uniprot ID	EMD_HUMAN
Immunogen	
Immunogen Region	150-254
Specificity	A synthetic peptide corresponding to a sequence within amino acids 150-254 of human Emerin/EMD (P50402).
Immunogen Sequence	RERPMYGRDSAYQSITHYRP VSASRSSLDLSYYPTSSTS FMSSSSSSSWLTRRAIRPE NRAPGAGLGQDRQVPLWGQL LLFLVFIVLFFIYHFMAQE EGNPF



Confocal imaging of HeLa cells using Emerin/EMD Rabbit monoclonal antibody (STJ11102013, dilution 1:100) (Red). The cells were counterstained with Alpha-tubulin (ubiquitous) chain Rabbit monoclonal antibody (dilution 1:100) (Green). DAPI was used for nuclear staining (blue). Objective: 60x.



Immunohistochemistry analysis of Emerin/EMD in paraffin-embedded human colon using Emerin/EMD Rabbit monoclonal antibody (STJ11102013) at dilution of 1:100 (40x lens). Perform microwave antigen retrieval with 10 mM PBS buffer pH 7.2 before commencing with immunohistochemistry staining protocol.



Western blot analysis of various lysates using Emerin/EMD Rabbit monoclonal antibody (STJ11102013) at 1:1000 dilution. Secondary antibody: HRP Goat Anti-Rabbit IgG (H+L) (STJ5000665) at 1:10000 dilution. Lysates/proteins: 25 µg per lane. Blocking buffer: 3% nonfat dry milk in TBST. Detection: ECL Basic Kit. Exposure time: 90s.

This product is suitable for in-vitro studies under the RESEARCH USE ONLY [RUO] licence. This product must not be used as for diagnostic or other medical purposes.
St John's Laboratory Ltd, Knowledge Dock Business Centre, University Way, London, E16 2RD | Tel: 0208 223 3081