

**Anti-PFKFB3 antibody (400-500) [S8MR] (STJ11101968)**  
STJ11101968

**GENERAL INFORMATION**

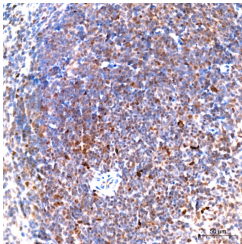
<b>Product Type</b>	Primary antibodies
<b>Short Description</b>	
<b>Applications</b>	WB/IHC-P/ELISA
<b>Host/Source</b>	Rabbit
<b>Reactivity</b>	Human/Mouse

**PRODUCT PROPERTIES**

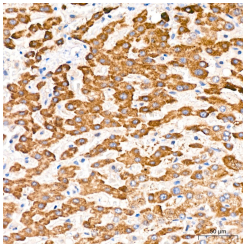
<b>Clonality</b>	Monoclonal
<b>Clone ID</b>	S8MR
<b>Concentration</b>	Lot specific
<b>Conjugation</b>	Unconjugated
<b>Purification</b>	Affinity purification
<b>Dilution Range</b>	WB:1:100-1:500 IHC-P:1:50-1:200 ELISA:Recommended starting concentration is 1 Mu g/mL. Please optimize the concentration based on your specific assay requirements.
<b>Formulation</b>	PBS with 0.05% Proclin300, 0.05% BSA, 50% Glycerol, pH 7.3.
<b>Isotype</b>	IgG
<b>Storage Instruction</b>	Store at -20°C for up to 1 year from the date of receipt, and avoid repeat freeze-thaw cycles.

**TARGET INFORMATION**

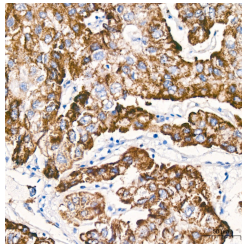
<b>Gene ID</b>	5209
<b>Gene Symbol</b>	PFKFB3
<b>Uniprot ID</b>	F263_HUMAN
<b>Immunogen</b>	
<b>Immunogen Region</b>	400-500
<b>Specificity</b>	A synthetic peptide corresponding to a sequence within amino acids 400-500 of human PFKFB3 (NP_004557.1).
<b>Immunogen Sequence</b>	LDKSAEEMPYLKPLHTVLK LTPVAYGCRVESIYLNVESV CTHRERSEDAKKGPNLMRR NSVTPLASPEPTKKPRINSF EEHVASTSAALPSCLPPEVP T



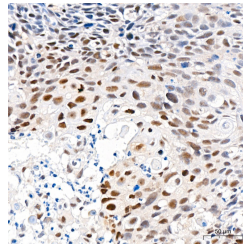
Immunohistochemistry analysis of PFKFB3 in paraffin-embedded mouse spleen tissue using PFKFB3 Rabbit monoclonal antibody (STJ11101968) at a dilution of 1:200 (40x lens). High pressure antigen retrieval was performed with 0.01 M citrate buffer (pH 6.0) prior to immunohistochemistry staining.



Immunohistochemistry analysis of PFKFB3 in paraffin-embedded human liver tissue using PFKFB3 Rabbit monoclonal antibody (STJ11101968) at a dilution of 1:200 (40x lens). High pressure antigen retrieval was performed with 0.01 M citrate buffer (pH 6.0) prior to immunohistochemistry staining.



Immunohistochemistry analysis of PFKFB3 in paraffin-embedded human liver cancer tissue using PFKFB3 Rabbit monoclonal antibody (STJ11101968) at a dilution of 1:200 (40x lens). High pressure antigen retrieval was performed with 0.01 M citrate buffer (pH 6.0) prior to immunohistochemistry staining.



Immunohistochemistry analysis of PFKFB3 in paraffin-embedded human cervix cancer tissue using PFKFB3 Rabbit monoclonal antibody (STJ11101968) at a dilution of 1:200 (40x lens). High pressure antigen retrieval was performed with 0.01 M citrate buffer (pH 6.0) prior to immunohistochemistry staining.

This product is suitable for in-vitro studies under the RESEARCH USE ONLY [RUO] licence. This product must not be used as for diagnostic or other medical purposes.  
St John's Laboratory Ltd, Knowledge Dock Business Centre, University Way, London, E16 2RD | Tel: 0208 223 3081