

Anti-FGF21 antibody (29-209) [S7MR] (STJ11101967)
STJ11101967

GENERAL INFORMATION

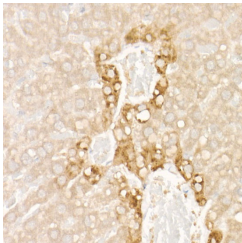
Product Type	Primary antibodies
Short Description	
Applications	WB/IHC-P/ELISA
Host/Source	Rabbit
Reactivity	Human/Mouse/Rat

PRODUCT PROPERTIES

Clonality	Monoclonal
Clone ID	S7MR
Concentration	Lot specific
Conjugation	Unconjugated
Purification	Affinity purification
Dilution Range	WB:1:3000-1:6000 IHC-P:1:100-1:1000 ELISA:Recommended starting concentration is 1 Mu g/mL. Please optimize the concentration based on your specific assay requirements.
Formulation	PBS with 0.05% Proclin300, 0.05% BSA, 50% Glycerol, pH 7.3.
Isotype	IgG
Storage Instruction	Store at -20°C for up to 1 year from the date of receipt, and avoid repeat freeze-thaw cycles.

TARGET INFORMATION

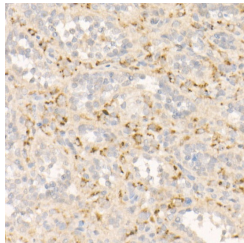
Gene ID	26291
Gene Symbol	FGF21
Uniprot ID	FGF21_HUMAN
Immunogen	
Immunogen Region	29-209
Specificity	Recombinant fusion protein containing a sequence corresponding to amino acids 29-209 of human FGF21 (NP_061986.1).
Immunogen Sequence	HPIDSSPLLQFGGQVRQRY LYTDDAQTEAHLEIREDT VGGAADQSPESLLQLKALKP GVIQILGVKTSRFLCQRPDG ALYGSLHFDPEACSFRELL EDGYNVYQSEAHGLPLHLPG NKSPHRDPAPRGPARFLPLP GLPPALPEPPGILAPQPPDV GSSDPLSMVGPSQGRSPSYA S



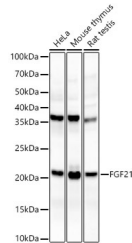
Immunohistochemistry analysis of paraffin-embedded rat liver using FGF21 Rabbit monoclonal antibody (STJ11101967) at dilution of 1:100 (40x lens). Perform high pressure antigen retrieval with 10 mM citrate buffer pH 6.0 before commencing with immunohistochemistry staining protocol.



Immunohistochemistry analysis of paraffin-embedded mouse liver using FGF21 Rabbit monoclonal antibody (STJ11101967) at dilution of 1:100 (40x lens). Perform high pressure antigen retrieval with 10 mM citrate buffer pH 6.0 before commencing with immunohistochemistry staining protocol.



Immunohistochemistry analysis of paraffin-embedded human spleen using FGF21 Rabbit monoclonal antibody (STJ11101967) at dilution of 1:100 (40x lens). Perform high pressure antigen retrieval with 10 mM citrate buffer pH 6.0 before commencing with immunohistochemistry staining protocol.



Western blot analysis of various lysates, using FGF21 Rabbit monoclonal antibody (STJ11101967) at 1:3000 dilution. Secondary antibody: HRP Goat Anti-Rabbit IgG (H+L) (STJS000896) at 1:10000 dilution. Lysates/proteins: 25 Mu g per lane. Blocking buffer: 3% nonfat dry milk in TBST. Detection: ECL Basic Kit. Exposure time: 60s.

This product is suitable for in-vitro studies under the RESEARCH USE ONLY [RUO] licence. This product must not be used as for diagnostic or other medical purposes.
St John's Laboratory Ltd, Knowledge Dock Business Centre, University Way, London, E16 2RD | Tel: 0208 223 3081