

Anti-MT-CO2 antibody (128-227) [S8MR] (STJ11101958)

STJ11101958

GENERAL INFORMATION

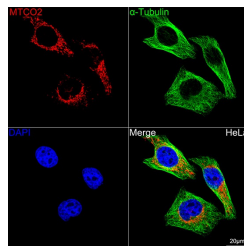
Product Type	Primary antibodies
Short Description	
Applications	WB/IHC-P/IF/ICC/ELISA
Host/Source	Rabbit
Reactivity	Human

PRODUCT PROPERTIES

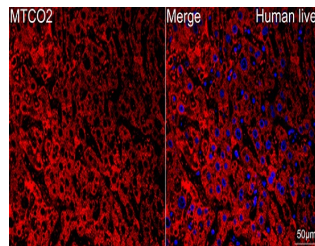
Clonality	Monoclonal
Clone ID	S8MR
Concentration	Lot specific
Conjugation	Unconjugated
Purification	Affinity purification
Dilution Range	WB:1:1000-1:6000 IHC-P:1:200-1:800 IF/ICC:1:200-1:800 ELISA:Recommended starting concentration is 1 µg/mL. Please optimize the concentration based on your specific assay requirements.
Formulation	PBS with 0.02% Sodium Azide, 0.05% BSA, 50% Glycerol, pH 7.3.
Isotype	IgG
Storage Instruction	Store at -20°C for up to 1 year from the date of receipt, and avoid repeat freeze-thaw cycles.

TARGET INFORMATION

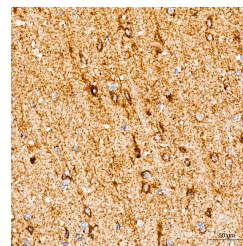
Gene ID	4513
Gene Symbol	MT-CO2
Uniprot ID	COX2_HUMAN
Immunogen	
Immunogen Region	128-227
Specificity	A synthetic peptide corresponding to a sequence within amino acids 128-227 of human MTCO2 (P00403).
Immunogen Sequence	LEPGDLRLLDVDNRVLPVE APIRMMITSQDVLHSHWAVPT LGLKTDAPGRLNQTTFTAT RPGVYYGQCSEICGANHSFM PIVLELPLKIFEMGPVFTL



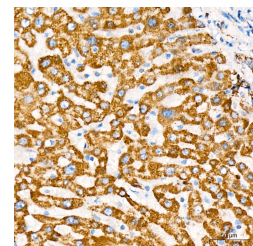
Confocal imaging of HeLa cells using A MTCO2 Rabbit monoclonal antibody (STJ11101958, dilution 1:200) followed by a further incubation with Cy3 Goat Anti-Rabbit IgG (H+L) (dilution 1:500) (Red). The cells were counterstained with Alpha-Tubulin Mouse monoclonal antibody (dilution 1:400) followed by incubation with ABFluor 488-conjugated Goat Anti-Mouse IgG (H+L) antibody (dilution 1:500) (Green). DAPI was used for nuclear staining (Blue). Objective: 100x.



Confocal imaging of A paraffin-embedded Human liver tissue using A MTCO2 Rabbit monoclonal antibody (STJ11101958, dilution 1:200) followed by a further incubation with Cy3 Goat Anti-Rabbit IgG (H+L) (dilution 1:500) (Red). DAPI was used for nuclear staining (Blue). Objective: 40x. Perform high pressure antigen retrieval with 0.01 M citrate buffer (pH 6.0) prior to IF staining.



Immunohistochemistry analysis of A MTCO2 in paraffin-embedded A human brain tissue using A MTCO2 Rabbit monoclonal antibody (STJ11101958) at a dilution of 1:200 (40x lens). High pressure antigen retrieval was performed with 0.01 M citrate buffer (pH 6.0) prior to immunohistochemistry staining.



Immunohistochemistry analysis of A MTCO2 in paraffin-embedded A human liver tissue using A MTCO2 Rabbit monoclonal antibody (STJ11101958) at a dilution of 1:200 (40x lens). High pressure antigen retrieval was performed with 0.01 M citrate buffer (pH 6.0) prior to immunohistochemistry staining.

This product is suitable for in-vitro studies under the RESEARCH USE ONLY [RUO] licence. This product must not be used as for diagnostic or other medical purposes.
St John's Laboratory Ltd, Knowledge Dock Business Centre, University Way, London, E16 2RD | Tel: 0208 223 3081