

Anti-MYLK antibody (1800-1900) [S7MR] (STJ11101957)

STJ11101957

GENERAL INFORMATION

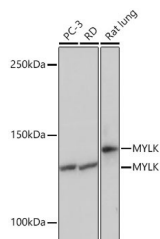
Product Type	Primary antibodies
Short Description	
Applications	WB/ELISA
Host/Source	Rabbit
Reactivity	Human/Rat

PRODUCT PROPERTIES

Clonality	Monoclonal
Clone ID	S7MR
Concentration	Lot specific
Conjugation	Unconjugated
Purification	Affinity purification
Dilution Range	WB:1:500-1:2000 ELISA:Recommended starting concentration is 1 Mu g/mL. Please optimize the concentration based on your specific assay requirements.
Formulation	PBS with 0.02% Sodium Azide, 0.05% BSA, 50% Glycerol, pH 7.3.
Isotype	IgG
Storage Instruction	Store at -20°C for up to 1 year from the date of receipt, and avoid repeat freeze-thaw cycles.

TARGET INFORMATION

Gene ID	4638
Gene Symbol	MYLK
Uniprot ID	MYLK_HUMAN
Immunogen	
Immunogen Region	1800-1900
Specificity	A synthetic peptide corresponding to a sequence within amino acids 1800-1900 of human MYLK (Q15746).
Immunogen Sequence	VAEEKPHVKPYFSKTIRDLE VVEGSAARFDCKIEGYDPE VVWFKDDQSIRESRHFQIDY DEDGNCSLIISDVCGDDDAK YTCKAVNSLGEATCTAELIV E



Western blot analysis of extracts of various cell lines, using MYLK Rabbit monoclonal antibody (STJ11101957) at 1:1000 dilution. Secondary antibody: HRP Goat Anti-Rabbit IgG (H+L) (STJSD00856) at 1:10000 dilution. Lysates/proteins: 25 Mu g per lane. Blocking buffer: 3% nonfat dry milk in TBST. Detection: ECL Basic Kit. Exposure time: 1s.

This product is suitable for in-vitro studies under the RESEARCH USE ONLY [RUO] licence. This product must not be used as for diagnostic or other medical purposes.
St John's Laboratory Ltd, Knowledge Dock Business Centre, University Way, London, E16 2RD | Tel: 0208 223 3081