

Anti-SMARCE1 antibody (2-100) [S5MR] (STJ11101955)
STJ11101955

GENERAL INFORMATION

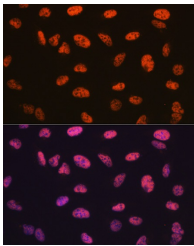
| | |
|--------------------------|--------------------|
| Product Type | Primary antibodies |
| Short Description | |
| Applications | WB/IF/ICC/ELISA |
| Host/Source | Rabbit |
| Reactivity | Human/Mouse/Rat |

PRODUCT PROPERTIES

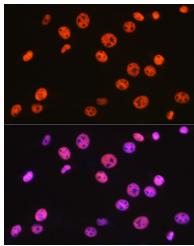
| | |
|----------------------------|---|
| Clonality | Monoclonal |
| Clone ID | S5MR |
| Concentration | Lot specific |
| Conjugation | Unconjugated |
| Purification | Affinity purification |
| Dilution Range | WB:1:500-1:1000 IF/ICC:1:50-1:200 ELISA:Recommended starting concentration is 1 Mu g/mL. Please optimize the concentration based on your specific assay requirements. |
| Formulation | PBS with 0.02% Sodium Azide, 0.05% BSA, 50% Glycerol, pH 7.3. |
| Isotype | IgG |
| Storage Instruction | Store at -20°C for up to 1 year from the date of receipt, and avoid repeat freeze-thaw cycles. |

TARGET INFORMATION

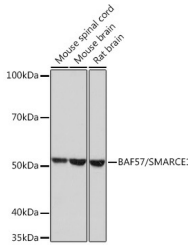
| | |
|---------------------------|---|
| Gene ID | 6605 |
| Gene Symbol | SMARCE1 |
| Uniprot ID | SMCE1_HUMAN |
| Immunogen | |
| Immunogen Region | 2-100 |
| Specificity | Recombinant fusion protein containing a sequence corresponding to amino acids 2-100 of human BAF57/SMARCE1 (NP_003070.3). |
| Immunogen Sequence | SKRPSYAPPPTPAPATQMPS TPGFVGYNPYSHLAYNNYRL GGNPGTNSRVLTASSGITIPK PPKPPDKPLMPYMRYSRKVW DQVKASNPDLKLWEIGKII |



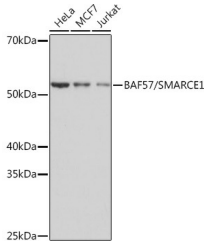
Immunofluorescence analysis of U-2 OS cells using BAF57/SMARCE1 Rabbit monoclonal antibody (STJ11101955) at dilution of 1:100 (40x lens). Blue: DAPI for nuclear staining.



Immunofluorescence analysis of NIH-3T3 cells using BAF57/SMARCE1 Rabbit monoclonal antibody (STJ11101955) at dilution of 1:100 (40x lens). Blue: DAPI for nuclear staining.



Western blot analysis of extracts of various cell lines, using BAF57/SMARCE1 Rabbit monoclonal antibody (STJ11101955) at 1:1000 dilution. Secondary antibody: HRP Goat Anti-Rabbit IgG (H+L) (STJS000856) at 1:10000 dilution. Lysates/proteins: 25 Mu g per lane. Blocking buffer: 3% nonfat dry milk in TBST. Detection: ECL Basic Kit. Exposure time: 30s.



Western blot analysis of extracts of various cell lines, using BAF57/SMARCE1 Rabbit monoclonal antibody (STJ11101955) at 1:1000 dilution. Secondary antibody: HRP Goat Anti-Rabbit IgG (H+L) (STJS000856) at 1:10000 dilution. Lysates/proteins: 25 Mu g per lane. Blocking buffer: 3% nonfat dry milk in TBST. Detection: ECL Basic Kit. Exposure time: 1s.

This product is suitable for in-vitro studies under the RESEARCH USE ONLY [RUO] licence. This product must not be used as for diagnostic or other medical purposes.
St John's Laboratory Ltd, Knowledge Dock Business Centre, University Way, London, E16 2RD | Tel: 0208 223 3081