

Anti-GRM5 antibody (1100-1200) [S7MR] (STJ11101947)

STJ11101947

GENERAL INFORMATION

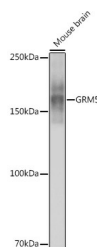
Product Type	Primary antibodies
Short Description	
Applications	WB/ELISA
Host/Source	Rabbit
Reactivity	Mouse/Rat

PRODUCT PROPERTIES

Clonality	Monoclonal
Clone ID	S7MR
Concentration	Lot specific
Conjugation	Unconjugated
Purification	Affinity purification
Dilution Range	WB:1:500-1:2000 ELISA:Recommended starting concentration is 1 Mu g/mL. Please optimize the concentration based on your specific assay requirements.
Formulation	PBS with 0.02% Sodium Azide, 0.05% BSA, 50% Glycerol, pH 7.3.
Isotype	IgG
Storage Instruction	Store at -20°C for up to 1 year from the date of receipt, and avoid repeat freeze-thaw cycles.

TARGET INFORMATION

Gene ID	2915
Gene Symbol	GRM5
Uniprot ID	GRM5_HUMAN
Immunogen	
Immunogen	1100-1200
Region	
Specificity	A synthetic peptide corresponding to a sequence within amino acids 1100-1200 of human GRM5 (P41594).
Immunogen	PKEIQLPTMTTFAEIQLP AIEVTGGAQPAAGAAAGDA ARESPAAGPEAAAKPDLEE LVALTPPSPFRDSDSGSTT
Sequence	PNSPVSEALCIPSSPKYDT L



Western blot analysis of extracts of Mouse brain, using GRM5 antibody (STJ11101947) at 1:1000 dilution. Secondary antibody: HRP Goat Anti-Rabbit IgG (H+L) (STJSD00856) at 1:10000 dilution. Lysates/proteins: 25 Mu g per lane. Blocking buffer: 3% nonfat dry milk in TBST. Detection: ECL Basic Kit. Exposure time: 30s.

This product is suitable for in-vitro studies under the RESEARCH USE ONLY [RUO] licence. This product must not be used as for diagnostic or other medical purposes.
St John's Laboratory Ltd, Knowledge Dock Business Centre, University Way, London, E16 2RD | Tel: 0208 223 3081