

Anti-CNN1 antibody (198-297) [S1MR] (STJ11101941)
STJ11101941

GENERAL INFORMATION

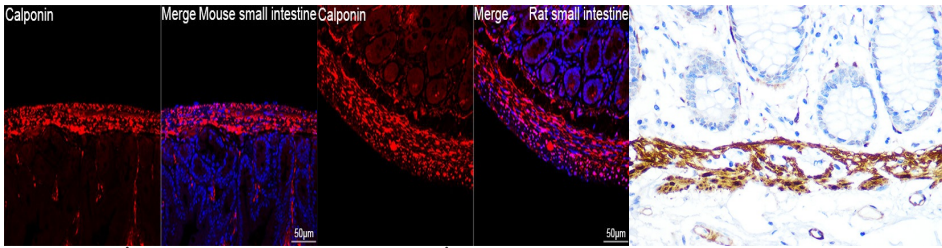
Product Type	Primary antibodies
Short Description	
Applications	WB/IHC-P/IF/ICC/ELISA
Host/Source	Rabbit
Reactivity	Human/Mouse/Rat

PRODUCT PROPERTIES

Clonality	Monoclonal
Clone ID	S1MR
Concentration	Lot specific
Conjugation	Unconjugated
Purification	Affinity purification
Dilution Range	WB:1:1000-1:6000 IHC-P:1:1000-1:5000 IF/ICC:1:200-1:800 ELISA:Recommended starting concentration is 1 Mu g/mL. Please optimize the concentration based on your specific assay requirements.
Formulation	PBS with 0.02% Sodium Azide, 0.05% BSA, 50% Glycerol, pH 7.3.
Isotype	IgG
Storage Instruction	Store at -20°C for up to 1 year from the date of receipt, and avoid repeat freeze-thaw cycles.

TARGET INFORMATION

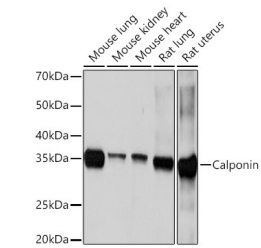
Gene ID	1264
Gene Symbol	CNN1
Uniprot ID	CNN1_HUMAN
Immunogen	
Immunogen Region	198-297
Specificity	A synthetic peptide corresponding to a sequence within amino acids 198-297 of human Calponin (P51911).
Immunogen Sequence	PLDQATISLQMGNTKNGASQA GMTAPGTRQIFEPGLGMEH CDTLNVSLQMGSNKGASQRG MTVYGLPRQVYDPKYCLTPE YPELGPAHNHHAHNYNSA



Confocal imaging of a paraffin-embedded Mouse small intestine tissue using a Calponin Rabbit monoclonal antibody (STJ11101941, dilution 1:200) followed by a further incubation with Cy3 Goat Anti-Rabbit IgG (H+L) (dilution 1:500) (Red). DAPI was used for nuclear staining (Blue). Objective: 40x. Perform high pressure antigen retrieval with 0.01 M citrate buffer (pH 6.0) prior to IF staining.

Confocal imaging of a paraffin-embedded Rat small intestine tissue using a Calponin Rabbit monoclonal antibody (STJ11101941, dilution 1:200) followed by a further incubation with Cy3 Goat Anti-Rabbit IgG (H+L) (dilution 1:500) (Red). DAPI was used for nuclear staining (Blue). Objective: 40x. Perform high pressure antigen retrieval with 0.01 M citrate buffer (pH 6.0) prior to IF staining.

Immunohistochemistry analysis of Calponin in paraffin-embedded human colon using Calponin Rabbit monoclonal antibody (STJ11101941) at dilution of 1:100 (40x lens). Perform microwave antigen retrieval with 10 mM PBS buffer pH 7.2 before commencing with immunohistochemistry staining protocol.



Western blot analysis of various lysates using Calponin Rabbit monoclonal antibody (STJ11101941) at 1:1000 dilution. Secondary antibody: HRP Goat Anti-Rabbit IgG (H+L) (STJ5000856) at 1:10000 dilution. Lysates/proteins: 25 Mu g per lane. Blocking buffer: 3% nonfat dry milk in TBST. Detection: ECL Basic Kit. Exposure time: 10s.

This product is suitable for in-vitro studies under the RESEARCH USE ONLY [RUO] licence. This product must not be used as for diagnostic or other medical purposes.
St John's Laboratory Ltd, Knowledge Dock Business Centre, University Way, London, E16 2RD | Tel: 0208 223 3081