

Anti-P2RY6 antibody (229-328) [S6MR] (STJ11101936)

STJ11101936

GENERAL INFORMATION

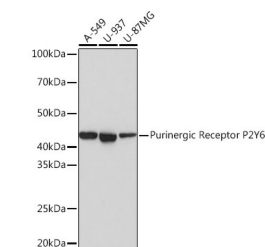
Product Type	Primary antibodies
Short Description	
Applications	WB/ELISA
Host/Source	Rabbit
Reactivity	Human

PRODUCT PROPERTIES

Clonality	Monoclonal
Clone ID	S6MR
Concentration	Lot specific
Conjugation	Unconjugated
Purification	Affinity purification
Dilution Range	WB:1:500-1:2000 ELISA:Recommended starting concentration is 1 Mu g/mL. Please optimize the concentration based on your specific assay requirements.
Formulation	PBS with 0.02% Sodium Azide, 0.05% BSA, 50% Glycerol, pH 7.3.
Isotype	IgG
Storage Instruction	Store at -20°C for up to 1 year from the date of receipt, and avoid repeat freeze-thaw cycles.

TARGET INFORMATION

Gene ID	5031
Gene Symbol	P2RY6
Uniprot ID	P2RY6_HUMAN
Immunogen	
Immunogen	229-328
Region	
Specificity	A synthetic peptide corresponding to a sequence within amino acids 229-328 of human Purinergic Receptor P2Y6 (Q15077).
Immunogen	VAQERRGKAARMAVVVAAAF AISFLPFHITKTAYLAVRST PGVPCTVLEAFAAAAYKGTRP FASANSVLDPILFYFTQKKF
Sequence	RRRPELLQLKTAKWQRQGR



Western blot analysis of extracts of various cell lines, using Purinergic Receptor Purinergic Receptor P2Y6 Rabbit monoclonal antibody (STJ11101936) at 1:1000 dilution. Secondary antibody: HRP Goat Anti-Rabbit IgG (H+L) (STJS000856) at 1:10000 dilution. Lysates/proteins: 25 Mu g per lane. Blocking buffer: 3% nonfat dry milk in TBST. Detection: ECL Basic Kit. Exposure time: 1s.

This product is suitable for in-vitro studies under the RESEARCH USE ONLY [RUO] licence. This product must not be used as for diagnostic or other medical purposes.
St John's Laboratory Ltd, Knowledge Dock Business Centre, University Way, London, E16 2RD | Tel: 0208 223 3081