

Anti-CR1 antibody (1940-2039) [S7MR] (STJ11101917)

STJ11101917

GENERAL INFORMATION

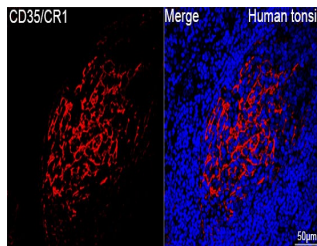
Product Type	Primary antibodies
Short Description	
Applications	IHC-P/IF/CC/ELISA
Host/Source	Rabbit
Reactivity	Human/Mouse/Rat

PRODUCT PROPERTIES

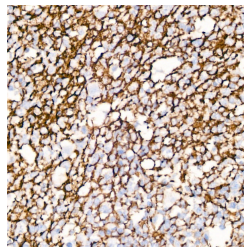
Clonality	Monoclonal
Clone ID	S7MR
Concentration	Lot specific
Conjugation	Unconjugated
Purification	Affinity purification
Dilution Range	IHC-P:1:50-1:200 IF/CC:1:50-1:200 ELISA:Recommended starting concentration is 1 Mu g/mL. Please optimize the concentration based on your specific assay requirements.
Formulation	PBS with 0.05% Proclin300, 0.05% BSA, 50% Glycerol, pH 7.3.
Isotype	IgG
Storage Instruction	Store at-20°C for up to 1 year from the date of receipt, and avoid repeat freeze-thaw cycles.

TARGET INFORMATION

Gene ID	1378
Gene Symbol	CR1
Uniprot ID	CR1_HUMAN
Immunogen	
Immunogen Region	1940-2039
Specificity	A synthetic peptide corresponding to a sequence within amino acids 1940-2039 of human CD35/CR1 (P17927).
Immunogen Sequence	DGYTLEGSPWSQCQADDRWD PPLAKCTSRTHDALIVGTLT GTIFFILLIIFLSWILKHR KGNNAHENPKEVAIHLHSQG GSSVHPRTLQTNEENSRVLP



Confocal imaging of a paraffin-embedded human tonsil tissue using a CD35/CR1 Rabbit monoclonal antibody (STJ11101917, dilution 1:100) followed by a further incubation with Cy3 Goat Anti-Rabbit IgG (H+L) (dilution 1:500) (Red). DAPI was used for nuclear staining (Blue). Objective: 40x. Perform high pressure antigen retrieval with 0.01 M citrate buffer (pH 6.0) prior to IF staining.



Immunohistochemistry analysis of CD35/CR1 in paraffin-embedded human tonsil using CD35/CR1 Rabbit monoclonal antibody (STJ11101917) at dilution of 1:50 (40x lens). Perform high pressure antigen retrieval with 10 mM citrate buffer pH 6.0 before commencing with immunohistochemistry staining protocol.

This product is suitable for in-vitro studies under the RESEARCH USE ONLY [RUO] licence. This product must not be used as for diagnostic or other medical purposes.
St John's Laboratory Ltd, Knowledge Dock Business Centre, University Way, London, E16 2RD | Tel: 0208 223 3081