

Anti-RCOR1 antibody (1-100) [S2MR] (STJ11101902)

STJ11101902

GENERAL INFORMATION

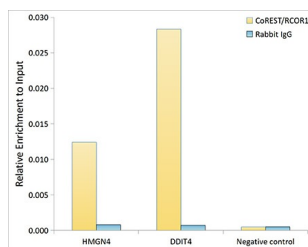
Product Type	Primary antibodies
Short Description	
Applications	WB/IHC-P/IP/ELISA/ChIP
Host/Source	Rabbit
Reactivity	Human/Mouse/Rat

PRODUCT PROPERTIES

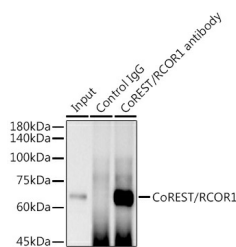
Clonality	Monoclonal
Clone ID	S2MR
Concentration	Lot specific
Conjugation	Unconjugated
Purification	Affinity purification
Dilution Range	WB:1:500-1:2000 IHC-P:1:200-1:800 IP:0.5 Mu g-4 Mu g antibody for 200 Mu g-400 Mu g extracts of whole cells ELISA:Recommended starting concentration is 1 Mu g/mL. Please optimize the concentration based on your specific assay requirements
Formulation	PBS with 0.02% Sodium Azide, 0.05% BSA, 50% Glycerol, pH 7.3.
Isotype	IgG
Storage Instruction	Store at -20°C for up to 1 year from the date of receipt, and avoid repeat freeze-thaw cycles.

TARGET INFORMATION

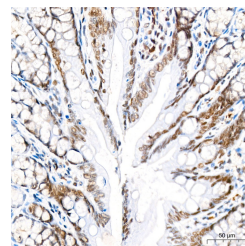
Gene ID	23186
Gene Symbol	RCOR1
Uniprot ID	RCOR1_HUMAN
Immunogen	
Immunogen Region	1-100
Specificity	A synthetic peptide corresponding to a sequence within amino acids 1-100 of human CoREST/RCOR1 (Q9UKL0).
Immunogen Sequence	MPAMVEKGPEVSGKRRGRNN AAASASAAAAASAAACAS PAATAASGAAASSASAAAAS AAAAPNNGQNKSLAAAAAPNG NSSSNSWEEGSGSSSDEEH



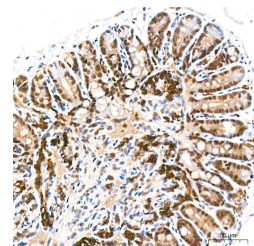
Chromatin immunoprecipitation analysis of extracts of HepG2 cells, using CoREST/RCOR1 antibody (STJ11101902) and rabbit IgG. The amount of immunoprecipitated DNA was checked by quantitative PCR. Histogram was constructed by the ratios of the immunoprecipitated DNA to the input.



Immunoprecipitation analysis of 300 Mu g extracts of THP-1 cells using 3 Mu g CoREST/RCOR1 antibody (STJ11101902). Western blot was performed from the immunoprecipitate using CoREST/RCOR1 antibody (STJ11101902) at a dilution of 1:1000.



Immunohistochemistry analysis of CoREST/RCOR1 in paraffin-embedded rat colon tissue using CoREST/RCOR1 Rabbit monoclonal antibody (STJ11101902) at a dilution of 1:200 (40x lens). High pressure antigen retrieval was performed with 0.01 M Tris-EDTA buffer (pH 9.0) prior to immunohistochemistry staining.



Immunohistochemistry analysis of CoREST/RCOR1 in paraffin-embedded mouse colon tissue using CoREST/RCOR1 Rabbit monoclonal antibody (STJ11101902) at a dilution of 1:200 (40x lens). High pressure antigen retrieval was performed with 0.01 M Tris-EDTA buffer (pH 9.0) prior to immunohistochemistry staining.

This product is suitable for in-vitro studies under the RESEARCH USE ONLY [RUO] licence. This product must not be used as for diagnostic or other medical purposes.
St John's Laboratory Ltd, Knowledge Dock Business Centre, University Way, London, E16 2RD | Tel: 0208 223 3081