

Anti-SFPQ antibody (600-707) [S4MR] (STJ11101884)

STJ11101884

GENERAL INFORMATION

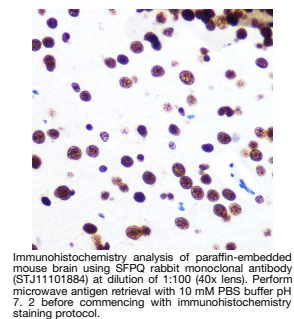
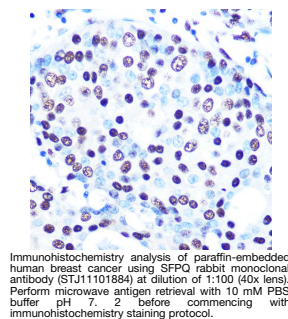
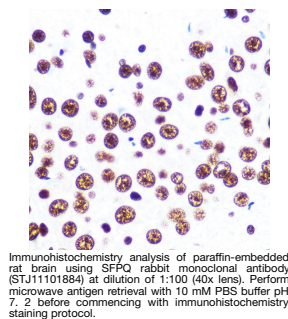
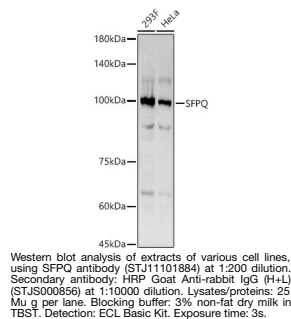
Product Type	Primary antibodies
Short Description	
Applications	WB/IHC-P/IF/ICC/IP/ELISA
Host/Source	Rabbit
Reactivity	Human/Mouse/Rat

PRODUCT PROPERTIES

Clonality	Monoclonal
Clone ID	S4MR
Concentration	Lot specific
Conjugation	Unconjugated
Purification	Affinity purification
Dilution Range	WB:1:50-1:200 IHC-P:1:50-1:200 IF/ICC:1:50-1:200 IP:0.5 Mu g-4 Mu g antibody for 200 Mu g-400 Mu g extracts of whole cells ELISA:Recommended starting concentration is 1 Mu g/mL. Please optimize the concentration based on your specific
Formulation	PBS with 0.02% Sodium Azide, 0.05% BSA, 50% Glycerol, pH 7.3.
Isotype	IgG
Storage	Store at -20°C for up to 1 year from the date of receipt, and avoid repeat freeze-thaw cycles.
Instruction	

TARGET INFORMATION

Gene ID	6421
Gene Symbol	SFPQ
Uniprot ID	SFPQ_HUMAN
Immunogen	
Immunogen Region	600-707
Specificity	A synthetic peptide corresponding to a sequence within amino acids 600-707 of human SFPQ (P23246).
Immunogen Sequence	MGYMDPRERDMRMGGGGAMN MGDYPYSGGQKFPPLGGGG IGYEANPGVPPATMSGSMMG SDMRTERFGQGGAGPVGGQG PRGMGPGTPAGYGRGREEYE GPNKKPRF



This product is suitable for in-vitro studies under the RESEARCH USE ONLY [RUO] licence. This product must not be used as for diagnostic or other medical purposes.
St John's Laboratory Ltd, Knowledge Dock Business Centre, University Way, London, E16 2RD | Tel: 0208 223 3081