

Anti-S100A6 antibody (1-90) [S4MR] (STJ11101874)
STJ11101874

GENERAL INFORMATION

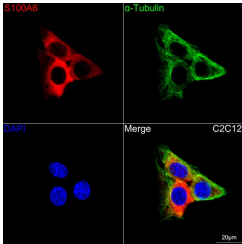
Product Type	Primary antibodies
Short Description	
Applications	WB/IHC-P/IF/ICC/ELISA
Host/Source	Rabbit
Reactivity	Human/Mouse/Rat

PRODUCT PROPERTIES

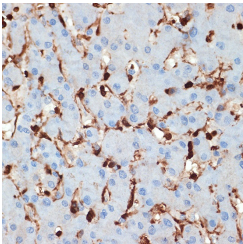
Clonality	Monoclonal
Clone ID	S4MR
Concentration	Lot specific
Conjugation	Unconjugated
Purification	Affinity purification
Dilution Range	WB:1:500-1:2000 IHC-P:1:50-1:200 IF/ICC:1:100-1:500 ELISA:Recommended starting concentration is 1 µg/mL. Please optimize the concentration based on your specific assay requirements.
Formulation	PBS with 0.02% Sodium Azide, 0.05% BSA, 50% Glycerol, pH 7.3.
Isotype	IgG
Storage Instruction	Store at -20°C for up to 1 year from the date of receipt, and avoid repeat freeze-thaw cycles.

TARGET INFORMATION

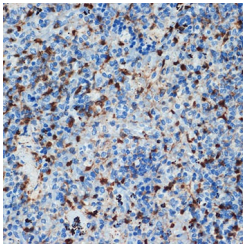
Gene ID	6277
Gene Symbol	S100A6
Uniprot ID	S10A6_HUMAN
Immunogen	
Immunogen Region	1-90
Specificity	Recombinant fusion protein containing a sequence corresponding to amino acids 1-90 of human S100A6 (P06703).
Immunogen Sequence	MACPLDQAIGLLVAIFHKYS GREGDKHTLSKKELKELIQK ELTIGSKLQDAEIARLMEDL DRNKDQEVNFQEYVTFLLGAL ALIYNEALKG



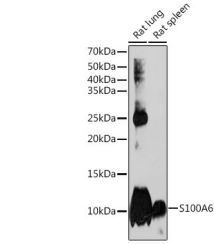
Confocal imaging of C2C12 cells using S100A6 Rabbit monoclonal antibody (STJ11101874, dilution 1:400) followed by a further incubation with Cy3 Goat Anti-Rabbit IgG (H+L) (dilution 1:500) (Red). The cells were counterstained with Alpha-Tubulin Mouse monoclonal antibody (dilution 1:400) followed by incubation with ABFluor 488-conjugated Goat Anti-Mouse IgG (H+L) antibody (dilution 1:500) (Green). DAPI was used for nuclear staining (Blue). Objective: 100x.



Immunohistochemistry analysis of S100A6 in paraffin-embedded human liver using S100A6 Rabbit monoclonal antibody (STJ11101874) at dilution of 1:100 (40x lens). Perform microwave antigen retrieval with 10 mM Tris/EDTA buffer pH 9.0 before commencing with immunohistochemistry staining protocol.



Immunohistochemistry analysis of S100A6 in paraffin-embedded rat spleen using S100A6 Rabbit monoclonal antibody (STJ11101874) at dilution of 1:100 (40x lens). Perform microwave antigen retrieval with 10 mM Tris/EDTA buffer pH 9.0 before commencing with immunohistochemistry staining protocol.



Western blot analysis of various lysates using S100A6 Rabbit monoclonal antibody (STJ11101874) at 1:1000 dilution. Secondary antibody: HRP Goat Anti-Rabbit IgG (H+L) (STJS000856) at 1:10000 dilution. Lysates/proteins: 25 µg per lane. Blocking buffer: 3% nonfat dry milk in TBST. Detection: ECL Basic Kit. Exposure time: 3min.