

Anti-AKT1S1 antibody (150-256) [S1MR] (STJ11101861)

STJ11101861

GENERAL INFORMATION

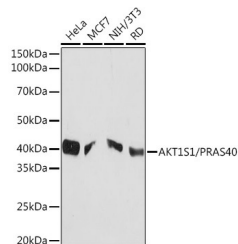
Product Type	Primary antibodies
Short Description	
Applications	WB/ELISA
Host/Source	Rabbit
Reactivity	Human/Mouse

PRODUCT PROPERTIES

Clonality	Monoclonal
Clone ID	S1MR
Concentration	Lot specific
Conjugation	Unconjugated
Purification	Affinity purification
Dilution Range	WB:1:500-1:1000 ELISA:Recommended starting concentration is 1 Mu g/mL. Please optimize the concentration based on your specific assay requirements.
Formulation	PBS with 0.02% Sodium Azide, 0.05% BSA, 50% Glycerol, pH 7.3.
Isotype	IgG
Storage	Store at -20°C for up to 1 year from the date of receipt, and avoid repeat freeze-thaw cycles.
Instruction	

TARGET INFORMATION

Gene ID	84335
Gene Symbol	AKT1S1
Uniprot ID	AKTS1_HUMAN
Immunogen	
Immunogen Region	150-256
Specificity	A synthetic peptide corresponding to a sequence within amino acids 150-256 of human AKT1S1/PRAS40 (Q96B36).
Immunogen Sequence	STDGSLSEETPAGPPTCSV PPASALPTQQYAKSLPVSVV VWGFKEKRTEARSSDEENGP PSSPDLDRIAASMRALVLR
Sequence	AEDTQVFGDLRPRRLNTSDF QKLKRY



Western blot analysis of extracts of various cell lines, using AKT1S1/PRAS40 Rabbit monoclonal antibody (STJ11101861) at 1:1000 dilution. Secondary antibody: HRP Goat Anti-Rabbit IgG (H+L) (STJS000856) at 1:10000 dilution. Lysates/proteins: 25 Mu g per lane. Blocking buffer: 3% nonfat dry milk in TBST. Detection: ECL Basic Kit. Exposure time: 3min.

This product is suitable for in-vitro studies under the RESEARCH USE ONLY [RUO] licence. This product must not be used as for diagnostic or other medical purposes.
St John's Laboratory Ltd, Knowledge Dock Business Centre, University Way, London, E16 2RD | Tel: 0208 223 3081