

Anti-RPA1 antibody (1-100) [S5MR] (STJ11101855)
STJ11101855

GENERAL INFORMATION

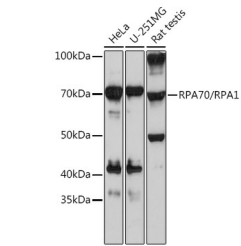
Product Type	Primary antibodies
Short Description	
Applications	WB/IP/ELISA/ChIP
Host/Source	Rabbit
Reactivity	Human/Rat

PRODUCT PROPERTIES

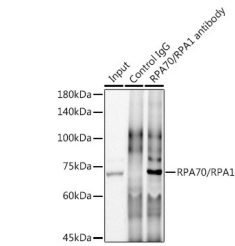
Clonality	Monoclonal
Clone ID	S5MR
Concentration	Lot specific
Conjugation	Unconjugated
Purification	Affinity purification
Dilution Range	WB:1:500-1:2000 IP:0.5 Mu g-4 Mu g antibody for 200 Mu g-400 Mu g extracts of whole cells ELISA:Recommended starting concentration is 1 Mu g/mL. Please optimize the concentration based on your specific assay requirements. ChIP:5 Mu g anti
Formulation	PBS with 0.02% Sodium Azide, 0.05% BSA, 50% Glycerol, pH 7.3.
Isotype	IgG
Storage Instruction	Store at-20°C for up to 1 year from the date of receipt, and avoid repeat freeze-thaw cycles.

TARGET INFORMATION

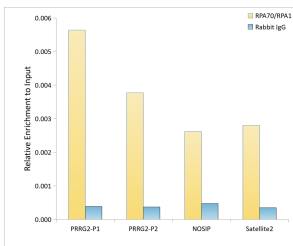
Gene ID	6117
Gene Symbol	RPA1
Uniprot ID	RFA1_HUMAN
Immunogen	
Immunogen Region	1-100
Specificity	A synthetic peptide corresponding to a sequence within amino acids 1-100 of human RPA70/RPA1 (P27694).
Immunogen Sequence	MVGQLSEGAIAIMQKGDTN IKPILQVINIRPITGNSPP RYRLMSDGLNTLSSFMLAT QLNPLVEEEQLSSNCVCQIH RFIVNTLKDGRRVILMELE



Western blot analysis of extracts of various cell lines, using RPA70/RPA1 rabbit monoclonal antibody (STJ11101855) at 1:1000 dilution. Secondary antibody: HRP Goat Anti-rabbit IgG (H+L) (STJ5000856) at 1:10000 dilution. Lysates/proteins: 25 Mu g per lane. Blocking buffer: 3% non-fat dry milk in TBST. Detection: ECL Basic Kit. Exposure time: 30s.



Immunoprecipitation analysis of 300 Mu g extracts of HeLa cells using 3 Mu g RPA70/RPA1 antibody (STJ11101855). Western blot was performed from the immunoprecipitate using RPA70/RPA1 antibody (STJ11101855) at a dilution of 1:1000.



Chromatin immunoprecipitation analysis of extracts of HeLa cells, using RPA70/RPA1 rabbit monoclonal antibody (STJ11101855) and rabbit IgG. The amount of immunoprecipitated DNA was checked by quantitative PCR. Histogram was constructed by the ratios of the immunoprecipitated DNA to the input.

This product is suitable for in-vitro studies under the RESEARCH USE ONLY [RUO] licence. This product must not be used as for diagnostic or other medical purposes.
St John's Laboratory Ltd, Knowledge Dock Business Centre, University Way, London, E16 2RD | Tel: 0208 223 3081