

Anti-LSP1 antibody (240-339) [S2MR] (STJ11101852)

STJ11101852

GENERAL INFORMATION

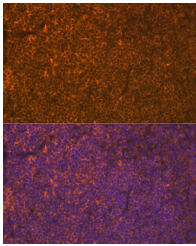
Product Type	Primary antibodies
Short Description	
Applications	WB/IF/ICC/ELISA
Host/Source	Rabbit
Reactivity	Human/Mouse/Rat

PRODUCT PROPERTIES

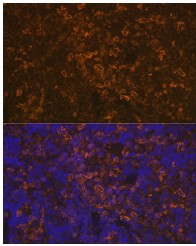
Clonality	Monoclonal
Clone ID	S2MR
Concentration	Lot specific
Conjugation	Unconjugated
Purification	Affinity purification
Dilution Range	WB:1:500-1:2000 IF/ICC:1:50-1:200 ELISA:Recommended starting concentration is 1 Mu g/mL. Please optimize the concentration based on your specific assay requirements.
Formulation	PBS with 0.02% Sodium Azide, 0.05% BSA, 50% Glycerol, pH 7.3.
Isotype	IgG
Storage Instruction	Store at -20°C for up to 1 year from the date of receipt, and avoid repeat freeze-thaw cycles.

TARGET INFORMATION

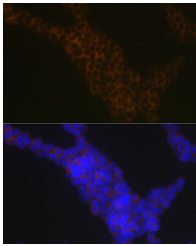
Gene ID	4046
Gene Symbol	LSP1
Uniprot ID	LSP1_HUMAN
Immunogen	
Immunogen Region	240-339
Specificity	A synthetic peptide corresponding to a sequence within amino acids 240-339 of human LSP1 (P33241).
Immunogen Sequence	TAGRTPKLARQASIELPSMA VASTKSRWETGEVQAQSAAK TPSCCKDIVAGDMSKSLWEQ KGGSKTSSTIKSTPSGKRYK FVATGHGKYEKVLVEGGPAP



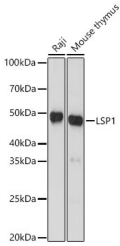
Immunofluorescence analysis of mouse spleen using LSP1 Rabbit monoclonal antibody (STJ11101852) at dilution of 1:100 (40x lens). Blue: DAPI for nuclear staining.



Immunofluorescence analysis of rat spleen using LSP1 Rabbit monoclonal antibody (STJ11101852) at dilution of 1:100 (40x lens). Blue: DAPI for nuclear staining.



Immunofluorescence analysis of Jurkat cells using LSP1 Rabbit monoclonal antibody (STJ11101852) at dilution of 1:100 (40x lens). Blue: DAPI for nuclear staining.



Western blot analysis of various lysates using LSP1 Rabbit monoclonal antibody (STJ11101852) at 1:1000 dilution. Secondary antibody: HRP Goat Anti-Rabbit IgG (H+L) (STJS000856) at 1:10000 dilution. Lysates/proteins: 25ug per lane. Blocking buffer: 3% nonfat dry milk in TBST. Detection: ECL Basic Kit. Exposure time: 60s.

This product is suitable for in-vitro studies under the RESEARCH USE ONLY [RUO] licence. This product must not be used as for diagnostic or other medical purposes.
St John's Laboratory Ltd, Knowledge Dock Business Centre, University Way, London, E16 2RD | Tel: 0208 223 3081