

Anti-CDC27 antibody (702-824) [S1MR] (STJ11101851)

STJ11101851

GENERAL INFORMATION

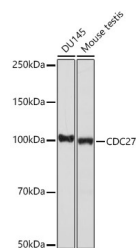
Product Type	Primary antibodies
Short Description	
Applications	WB/ELISA
Host/Source	Rabbit
Reactivity	Human/Mouse

PRODUCT PROPERTIES

Clonality	Monoclonal
Clone ID	S1MR
Concentration	Lot specific
Conjugation	Unconjugated
Purification	Affinity purification
Dilution Range	WB:1:500-1:2000 ELISA:Recommended starting concentration is 1 Mu g/mL. Please optimize the concentration based on your specific assay requirements.
Formulation	PBS with 0.02% Sodium Azide, 0.05% BSA, 50% Glycerol, pH 7.3.
Isotype	IgG
Storage Instruction	Store at -20°C for up to 1 year from the date of receipt, and avoid repeat freeze-thaw cycles.

TARGET INFORMATION

Gene ID	996
Gene Symbol	CDC27
Uniprot ID	CDC27_HUMAN
Immunogen	
Immunogen Region	702-824
Specificity	Recombinant fusion protein containing a sequence corresponding to amino acids 702-824 of human CDC27 (P30260). NPLCKFHRASVLFANEKYKS ALQEELKQIVPKESLVYF LIGKVYKKLGGTHLALMNFS WAMLDLPKGANNQIKEAIDK RYLPDDEEPITQEEQIMGTD ESQESSMTDADDTQLHAAES DEF
Immunogen Sequence	



This product is suitable for in-vitro studies under the RESEARCH USE ONLY [RUO] licence. This product must not be used as for diagnostic or other medical purposes.
St John's Laboratory Ltd, Knowledge Dock Business Centre, University Way, London, E16 2RD | Tel: 0208 223 3081