

Anti-CDH13 antibody (101-200) [S0MR] (STJ11101840)
STJ11101840

GENERAL INFORMATION

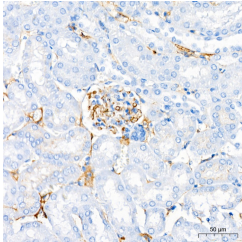
Product Type	Primary antibodies
Short Description	
Applications	WB/IHC-P/ELISA
Host/Source	Rabbit
Reactivity	Human/Mouse/Rat

PRODUCT PROPERTIES

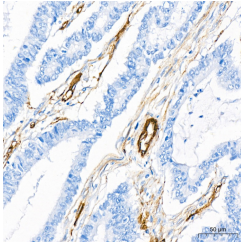
Clonality	Monoclonal
Clone ID	S0MR
Concentration	Lot specific
Conjugation	Unconjugated
Purification	Affinity purification
Dilution Range	WB:1:500-1:2000 IHC-P:1:50-1:200 ELISA:Recommended starting concentration is 1 Mu g/mL. Please optimize the concentration based on your specific assay requirements.
Formulation	PBS with 0.02% Sodium Azide, 0.05% BSA, 50% Glycerol, pH 7.3.
Isotype	IgG
Storage Instruction	Store at-20°C for up to 1 year from the date of receipt, and avoid repeat freeze-thaw cycles.

TARGET INFORMATION

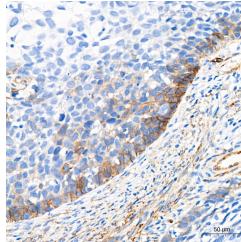
Gene ID	1012
Gene Symbol	CDH13
Uniprot ID	CAD13_HUMAN
Immunogen	
Immunogen Region	101-200
Specificity	Recombinant fusion protein containing a sequence corresponding to amino acids 101-200 of human Cadherin-13 (CDH13) (P55290).
Immunogen Sequence	PHAEDMAELVIVGGKDIQGS LQDIFKFARTSPVPRQKRSI VVSPILIPENQRQPFPRDVG KWVSDRPERSKFRLTGKGV DQEPKGIFRINENTGSVSVT



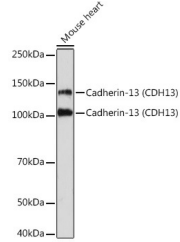
Immunohistochemistry analysis of Cadherin-13 (CDH13) in paraffin-embedded mouse kidney tissue using Cadherin-13 (CDH13) Rabbit monoclonal antibody (STJ11101840) at a dilution of 1:200 (40x lens). High pressure antigen retrieval was performed with 0.01 M citrate buffer (pH 6.0) prior to immunohistochemistry staining.



Immunohistochemistry analysis of Cadherin-13 (CDH13) in paraffin-embedded human colon carcinoma tissue using Cadherin-13 (CDH13) Rabbit monoclonal antibody (STJ11101840) at a dilution of 1:200 (40x lens). High pressure antigen retrieval was performed with 0.01 M citrate buffer (pH 6.0) prior to immunohistochemistry staining.



Immunohistochemistry analysis of Cadherin-13 (CDH13) in paraffin-embedded human cervix cancer tissue using Cadherin-13 (CDH13) Rabbit monoclonal antibody (STJ11101840) at a dilution of 1:200 (40x lens). High pressure antigen retrieval was performed with 0.01 M citrate buffer (pH 6.0) prior to immunohistochemistry staining.



Western blot analysis of extracts of Mouse heart, using Cadherin-13 (CDH13) Rabbit monoclonal antibody (STJ11101840) at 1:1000 dilution. Secondary antibody: HRP Goat Anti-Rabbit IgG (H+L) (STJS000856) at 1:10000 dilution. Lysates/proteins: 25 Mu g per lane. Blocking buffer: 3% nonfat dry milk in TBST. Detection: ECL Basic Kit. Exposure time: 3min.