

Anti-IRF6 antibody (368-467) [S7MR] (STJ11101837)

STJ11101837

GENERAL INFORMATION

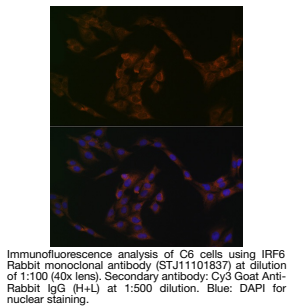
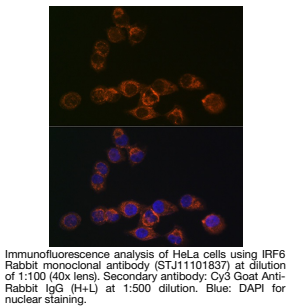
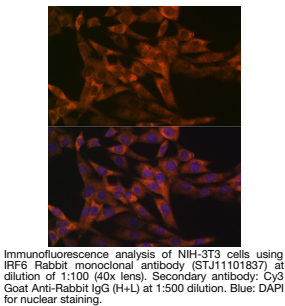
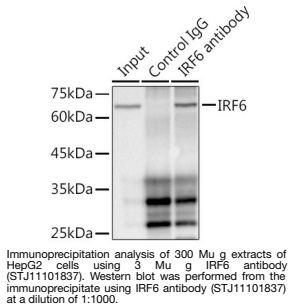
Product Type	Primary antibodies
Short Description	
Applications	WB/IF/ICC/IP/ELISA
Host/Source	Rabbit
Reactivity	Human/Mouse/Rat

PRODUCT PROPERTIES

Clonality	Monoclonal
Clone ID	S7MR
Concentration	Lot specific
Conjugation	Unconjugated
Purification	Affinity purification
Dilution Range	WB:1:500-1:1000 IF/ICC:1:50-1:200 IP:0.5 Mu g-4 Mu g antibody for 200 Mu g-400 Mu g extracts of whole cells ELISA:Recommended starting concentration is 1 Mu g/mL. Please optimize the concentration based on your specific assay requirements
Formulation	PBS with 0.02% Sodium Azide, 0.05% BSA, 50% Glycerol, pH 7.3.
Isotype	IgG
Storage Instruction	Store at -20°C for up to 1 year from the date of receipt, and avoid repeat freeze-thaw cycles.

TARGET INFORMATION

Gene ID	3664
Gene Symbol	IRF6
Uniprot ID	IRF6_HUMAN
Immunogen	
Immunogen Region	368-467
Specificity	A synthetic peptide corresponding to a sequence within amino acids 368-467 of human IRF6 (O14896).
Immunogen Sequence	PFEIYLCFGEWPDGKPLER KLILVQVIPVARMYEMFS GDFTRSFDSGSRVLQISTPD IKDNIVAQLKQLYRILQTQE SWQPMQPTPSMQLPALPPQ



This product is suitable for in-vitro studies under the RESEARCH USE ONLY [RUO] licence. This product must not be used as for diagnostic or other medical purposes.
St John's Laboratory Ltd, Knowledge Dock Business Centre, University Way, London, E16 2RD | Tel: 0208 223 3081