

Anti-ISG15 antibody (1-165) [S4MR] (STJ11101824)
STJ11101824

GENERAL INFORMATION

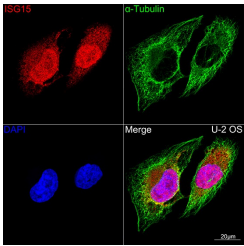
Product Type	Primary antibodies
Short Description	
Applications	WB/IF/ICC/ELISA
Host/Source	Rabbit
Reactivity	Human/Mouse/Rat

PRODUCT PROPERTIES

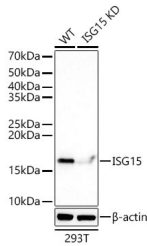
Clonality	Monoclonal
Clone ID	S4MR
Concentration	Lot specific
Conjugation	Unconjugated
Purification	Affinity purification
Dilution	WB:1:500-1:2000
Range	IF/CC:1:50-1:200
	ELISA:Recommended starting concentration is 1 μ g/mL. Please optimize the concentration based on your specific assay requirements.
Formulation	PBS with 0.05% Proclin300, 0.05% BSA, 50% Glycerol, pH 7.3.
Isotype	IgG
Storage	Store at -20°C for up to 1 year from the date of receipt, and avoid repeat freeze-thaw cycles.
Instruction	

TARGET INFORMATION

Gene ID	9636
Gene Symbol	ISG15
Uniprot ID	ISG15_HUMAN
Immunogen	
Immunogen Region	1-165
Specificity	Recombinant fusion protein containing a sequence corresponding to amino acids 1-165 of human ISG15 (NP_005092.1).
Immunogen Sequence	MGWDLTVKMLAGNEFQVSLSSMSVSELKAQITQKIGVHA FQQLAVHPSGVALQDRVPL ASQGLPGSTVLLVVDKCDDE PLSILVRNNKGRSSTYEVRLL TQTV AHLKQQVSGLEGVQDD LFWLTFEGKPLEDQLPLGEY GLKPLSTVFMNLRRLRGGGTE PGGRS



Confocal imaging of U-2 OS cells using [KD Validated] ISG15 Rabbit monoclonal antibody (STJ11101824, dilution 1:100) (Red). The cells were counterstained with Alpha-Tubulin Mouse monoclonal antibody (dilution 1:400) (Green). DAPI was used for nuclear staining (blue). Objective: 100x.



Western blot analysis of lysates from wild type (WT) and ISG15 Rabbit monoclonal antibody knockdown (KD) HeLa (KD) cells, using [KO Validated] ISG15 Rabbit monoclonal antibody (STJ11101824) at 1:510 dilution. Secondary antibody: HRP Goat Anti-Rabbit IgG (H+L) (STJS000856) at 1:10000 dilution. Lysates/proteins: 25 μ g per lane. Blocking buffer: 3% nonfat dry milk in TBST. Detection: ECL Basic Kit. Exposure time: 60s.

This product is suitable for in-vitro studies under the RESEARCH USE ONLY [RUO] licence. This product must not be used as for diagnostic or other medical purposes.
St John's Laboratory Ltd, Knowledge Dock Business Centre, University Way, London, E16 2RD | Tel: 0208 223 3081