

Anti-NDC80 antibody (543-642) [S6MR] (STJ11101816)

STJ11101816

GENERAL INFORMATION

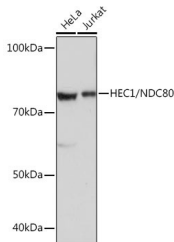
Product Type	Primary antibodies
Short Description	
Applications	WB/ELISA
Host/Source	Rabbit
Reactivity	Human

PRODUCT PROPERTIES

Clonality	Monoclonal
Clone ID	S6MR
Concentration	Lot specific
Conjugation	Unconjugated
Purification	Affinity purification
Dilution Range	WB:1:500-1:2000 ELISA:Recommended starting concentration is 1 Mu g/mL. Please optimize the concentration based on your specific assay requirements.
Formulation	PBS with 0.02% Sodium Azide, 0.05% BSA, 50% Glycerol, pH 7.3.
Isotype	IgG
Storage Instruction	Store at -20°C for up to 1 year from the date of receipt, and avoid repeat freeze-thaw cycles.

TARGET INFORMATION

Gene ID	10403
Gene Symbol	NDC80
Uniprot ID	NDC80_HUMAN
Immunogen	
Immunogen	543-642
Region	
Specificity	A synthetic peptide corresponding to a sequence within amino acids 543-642 of human HEC1/NDC80 (O14777).
Immunogen	ESTVNQGLSEAMNELDAVQR EYQLVQTTTEERRKVGNNL QRLLEMVATHVGSVEKHLEE QIAKVDREYEECMSEDLSSEN
Sequence	IKIIRDKYEKKATLIKSSEE



This product is suitable for in-vitro studies under the RESEARCH USE ONLY [RUO] licence. This product must not be used as for diagnostic or other medical purposes.
St John's Laboratory Ltd, Knowledge Dock Business Centre, University Way, London, E16 2RD | Tel: 0208 223 3081